

# **IPSec VPN Remote Client**

## **Setup Guide For Wiws XP and Vista**

## Table of Contents

1.	Introduction .....	3
2.	How to install VPN Client Software .....	4
3.	How to configure / use VPN Client .....	9

## 1. Introduction

HKBN's IP-VPN Service allows mobile or remote users to access the corporate network with the highest level of security through the Internet.

After installation of the IPSec VPN Remote Client software, transmission of data between the remote users and the corporate MPLS IP-VPN network is protected by encryption and authentication.

This user guide will direct you step-by-step to install the software and enable remote access.

Before you start to access the corporate network, you are recommended to have the following prerequisite information:

1. Group Access Information
2. Your login username and password

## 2. How to install VPN Client Software

For Windows XP and Vista 32bit/ 32bit SP1

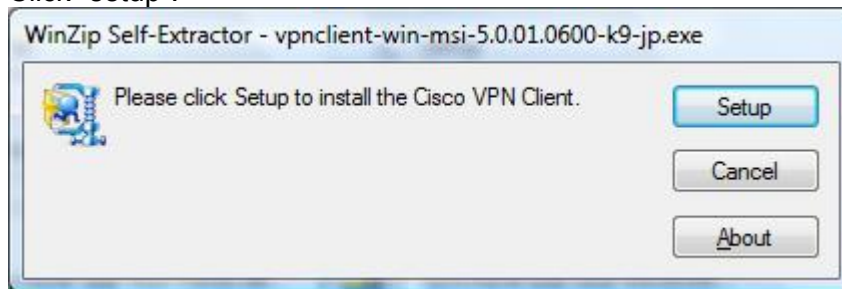
Please make sure that you are installing the IPSec Remote Client software for your Windows XP or Vista platform.

We use “Cisco System VPN Client 5.0” in this user guide.

### Installation Steps:

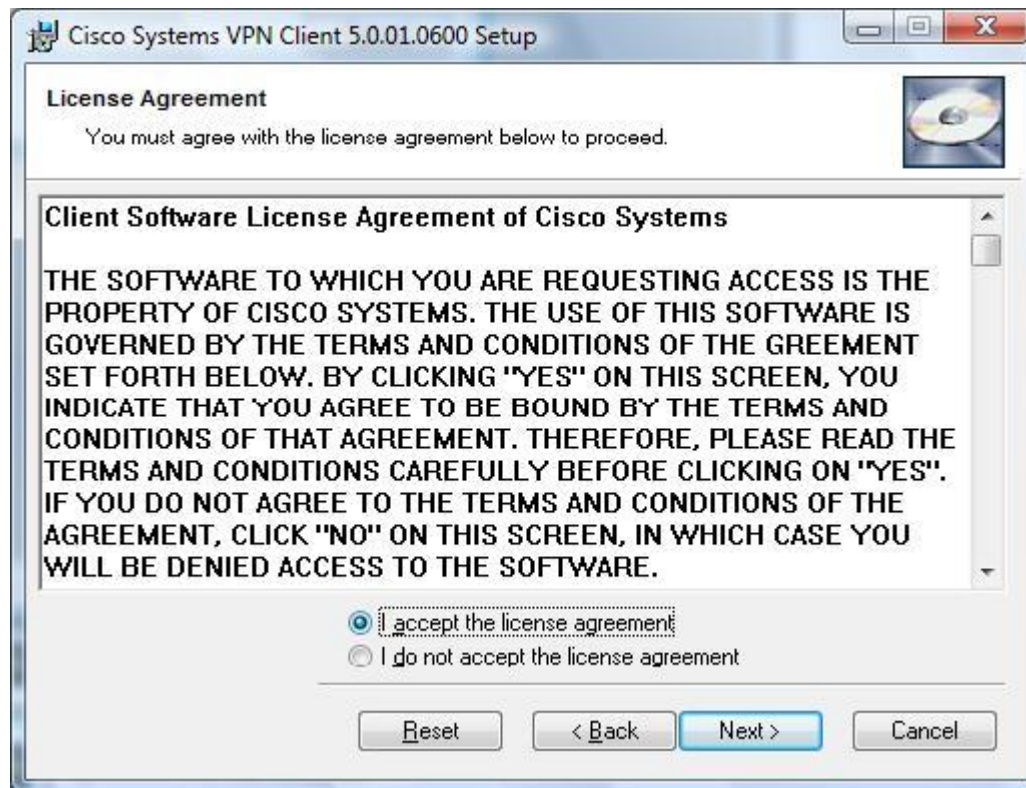
a) Double click to extract the file.

b) Click “setup”.

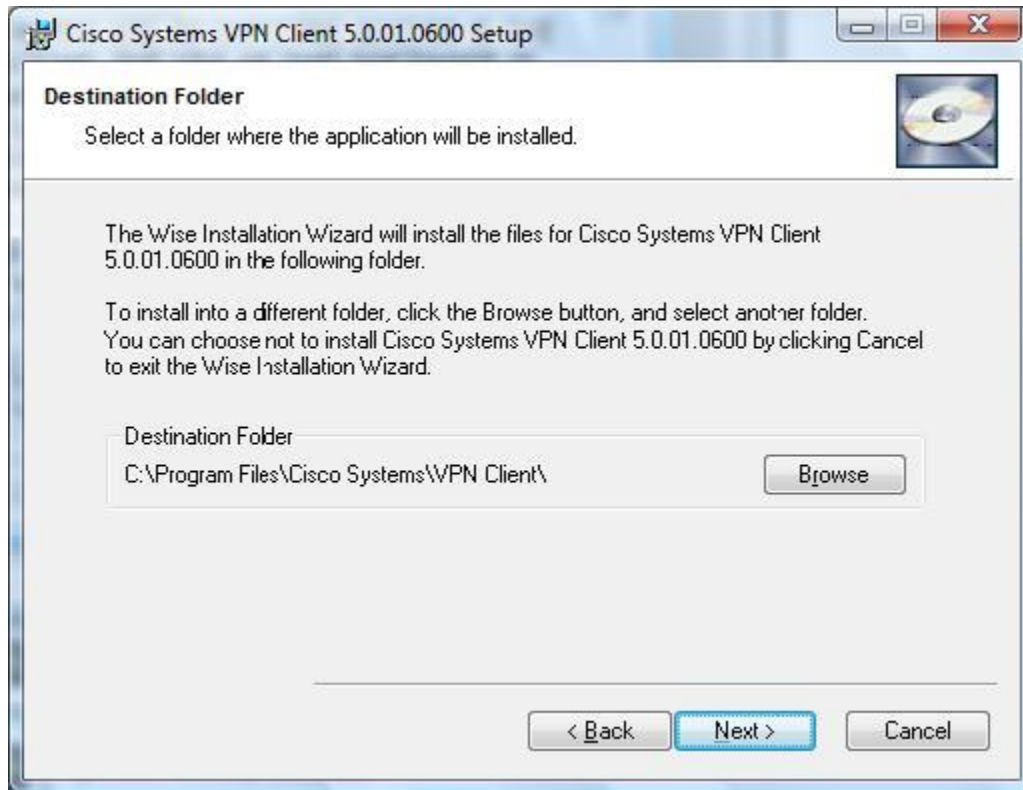


c) “Welcome” message will pop-up. Click “Next” to continue.

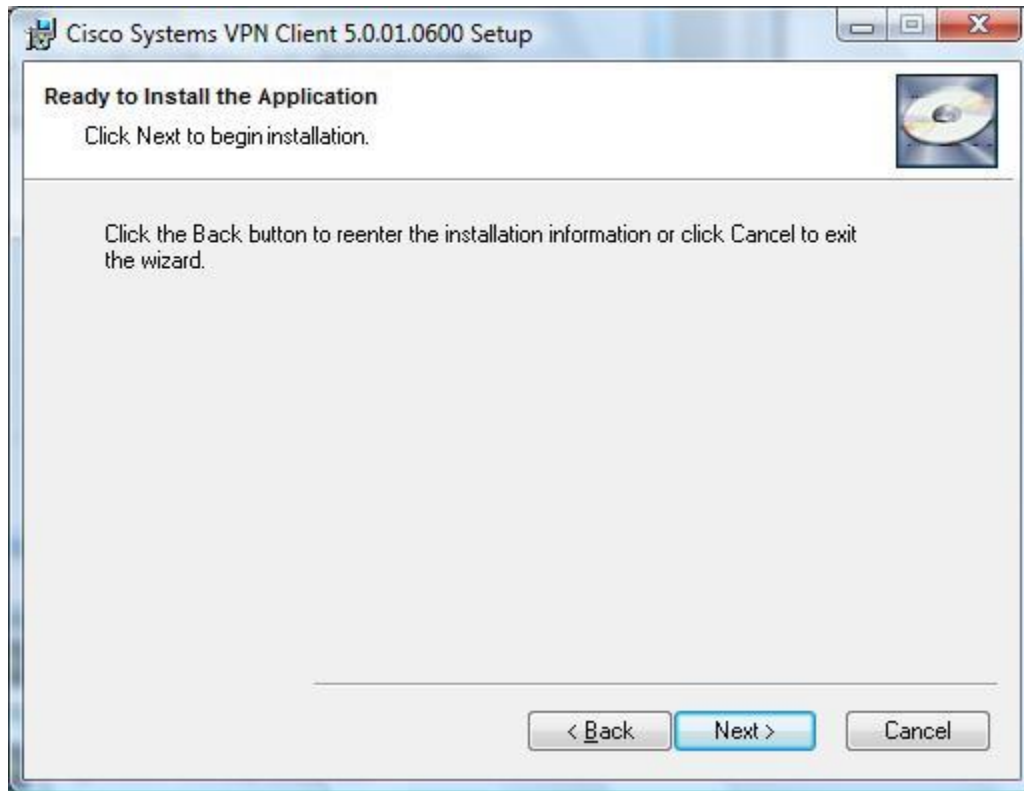
- d) "License Agreement" will pop up. (Please read it carefully.) Select "I accept the license agreement" and click "Next" to continue.



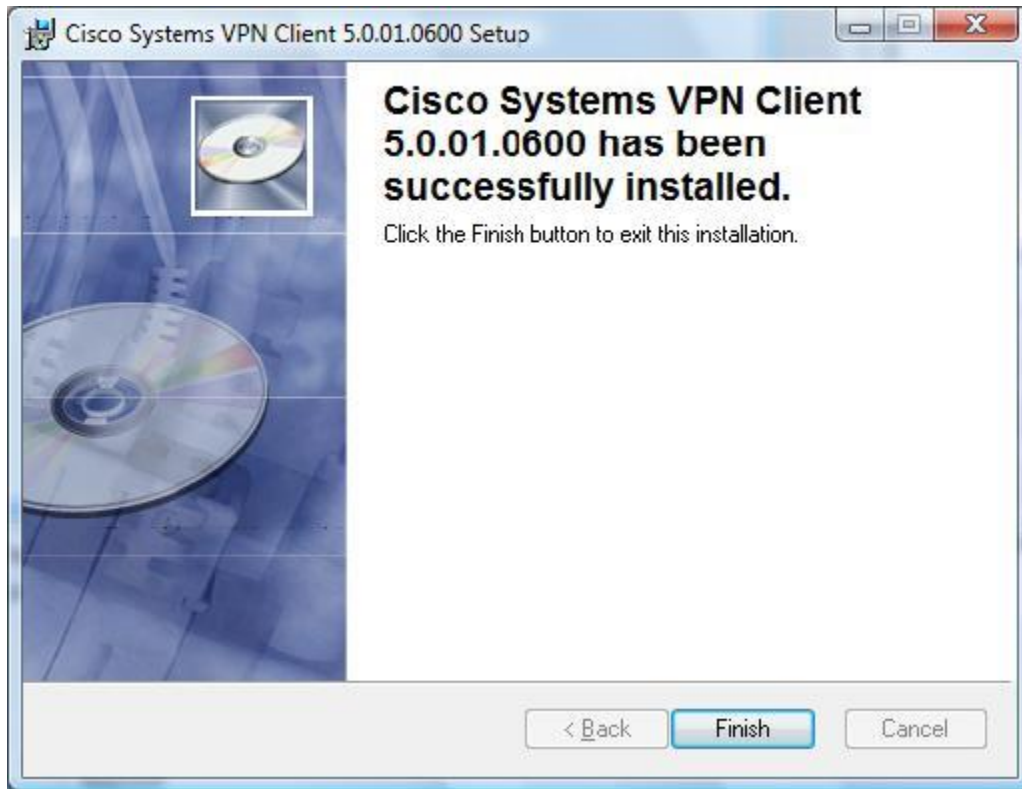
- e) "Destination Folder" will pop up. Click "Browse" to install the software at your Destination Folder or click "Next" to install at default folder.



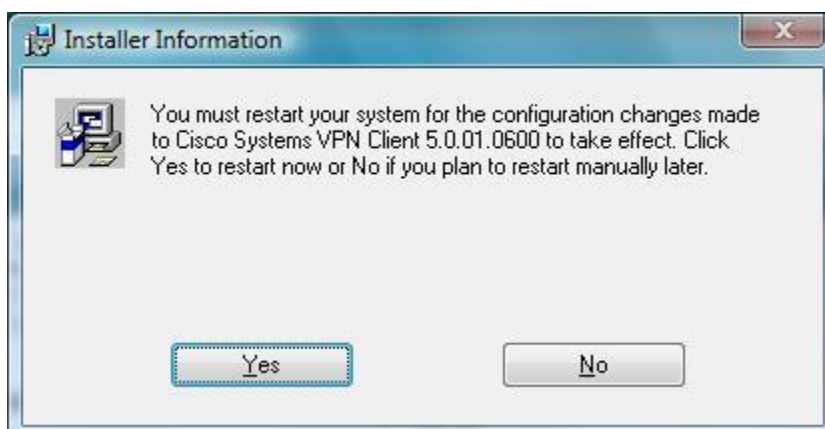
f) Click “Next” to start Installation.



g) Click “Finish” to exit the installation.



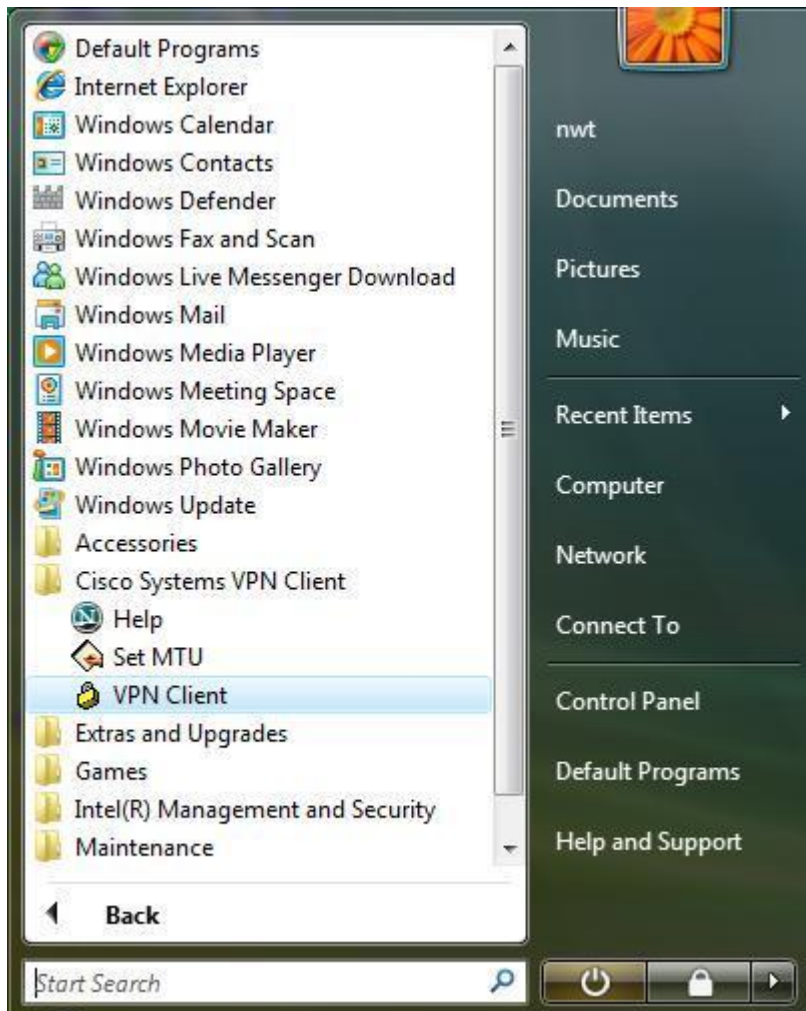
h) Click “Yes” to Reboot.



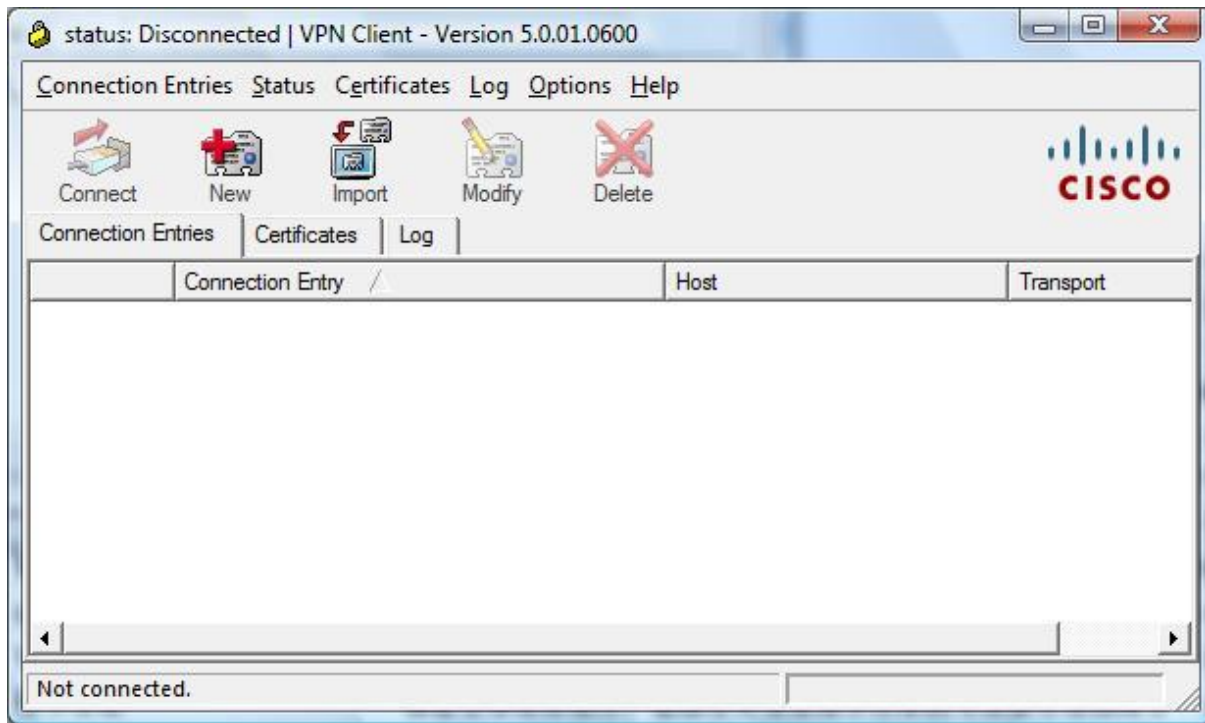


### 3 How to configure / use VPN Client

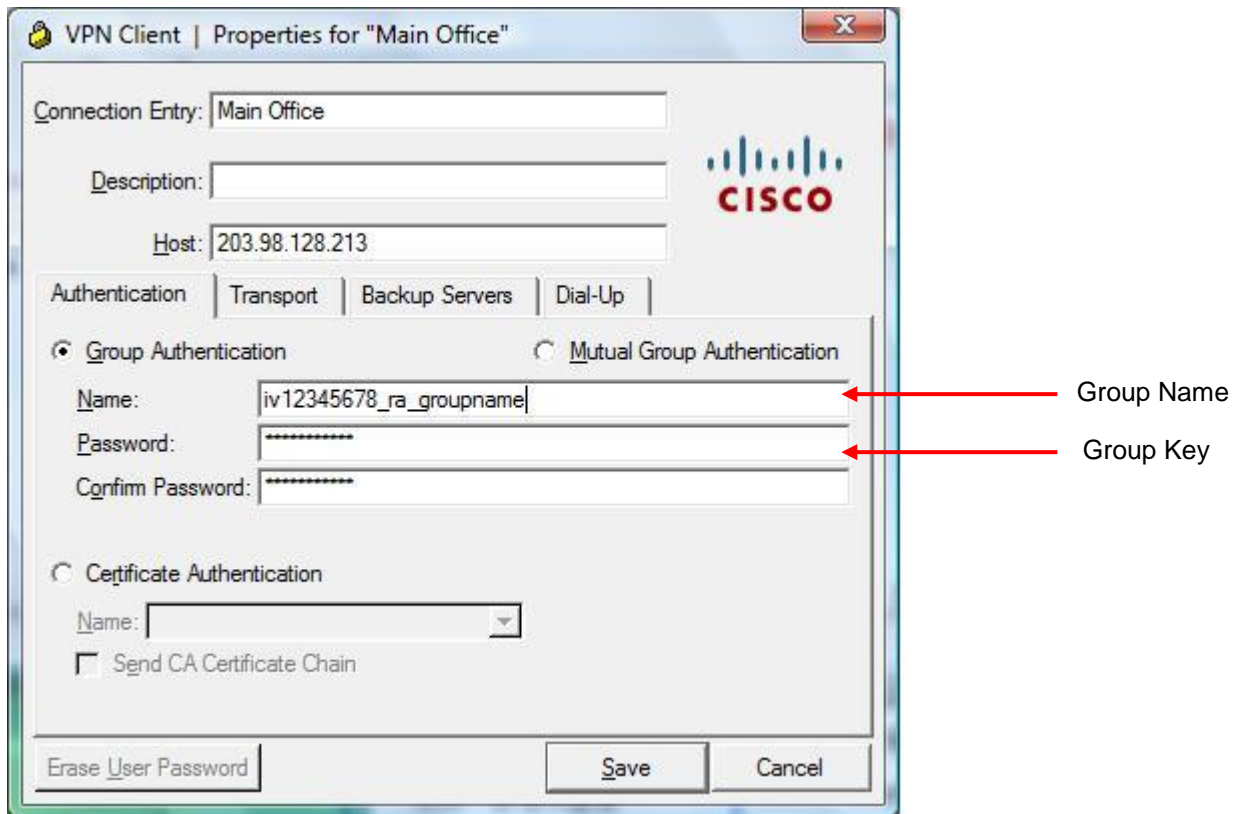
1. After installation, select "VPN Dialer" from the "Programs Menu".



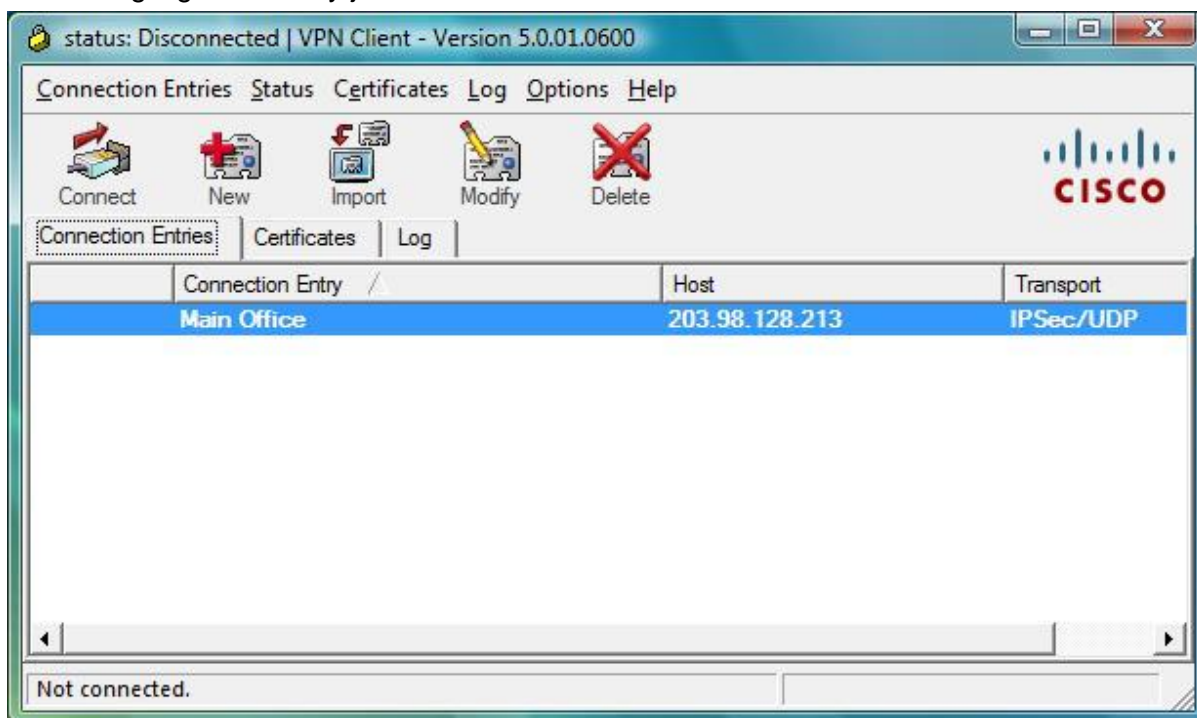
2. Click “New” to create a new profile for the VPN connection.



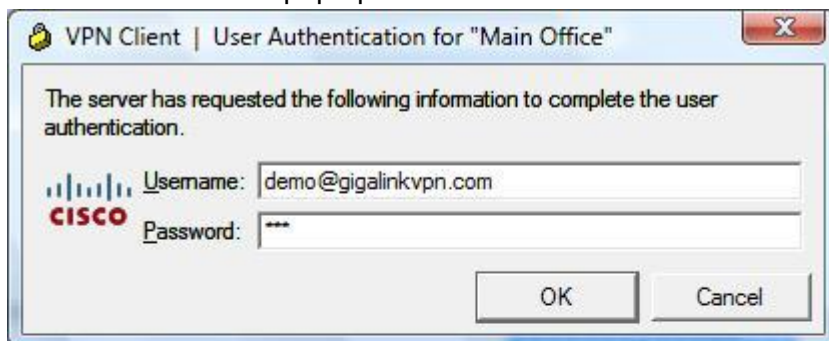
3. Enter the name of the connection in the field "Connection Entry", e.g. "Main Office".  
Enter the IP address of the VPN Concentrator in the field "Host", e.g. "203.98.128.213".  
Enter the Group Access Information in the field "Group Name and Group Key".  
Then click "Save".



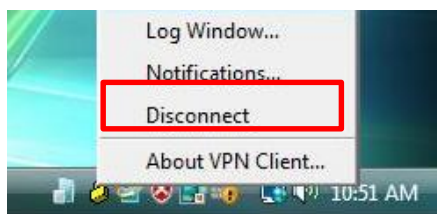
4. Highlight the Entry just created and click “Connect” to start the VPN connection.



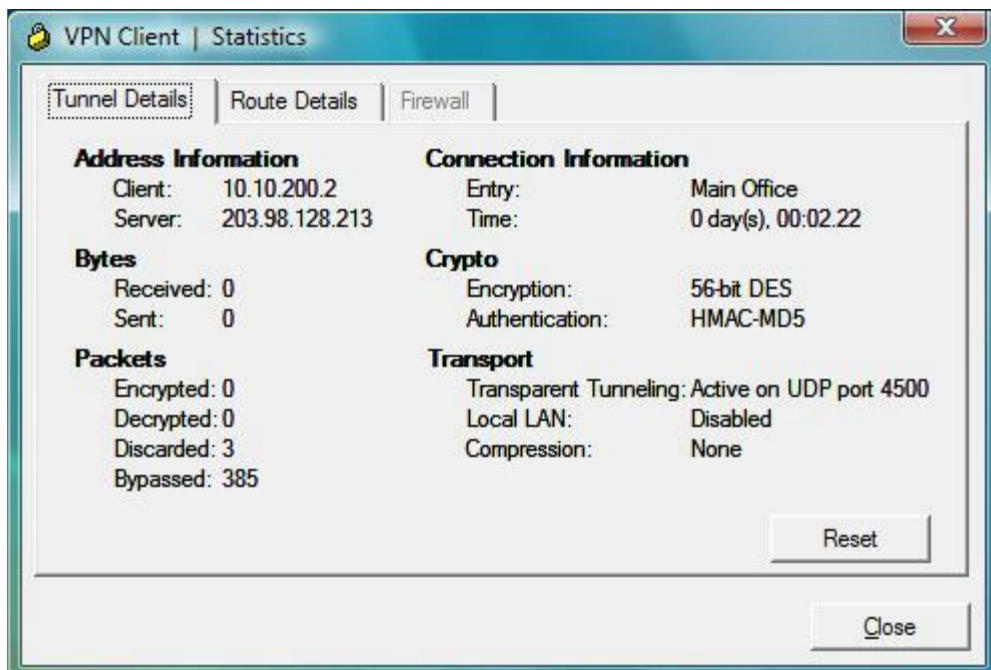
5. A window will pop up. Please enter the “Username” and “Password”.



- After connecting to the VPN, a VPN Client icon will appear at the System Tray (Lower Right corner of the Desktop). User may disconnect the VPN by right-clicking the icon and selecting “Disconnect”.



- More information will be displayed by right clicking the icon in the System Tray and choosing “Statistics”.



- END -