



企業方案
Enterprise Solutions

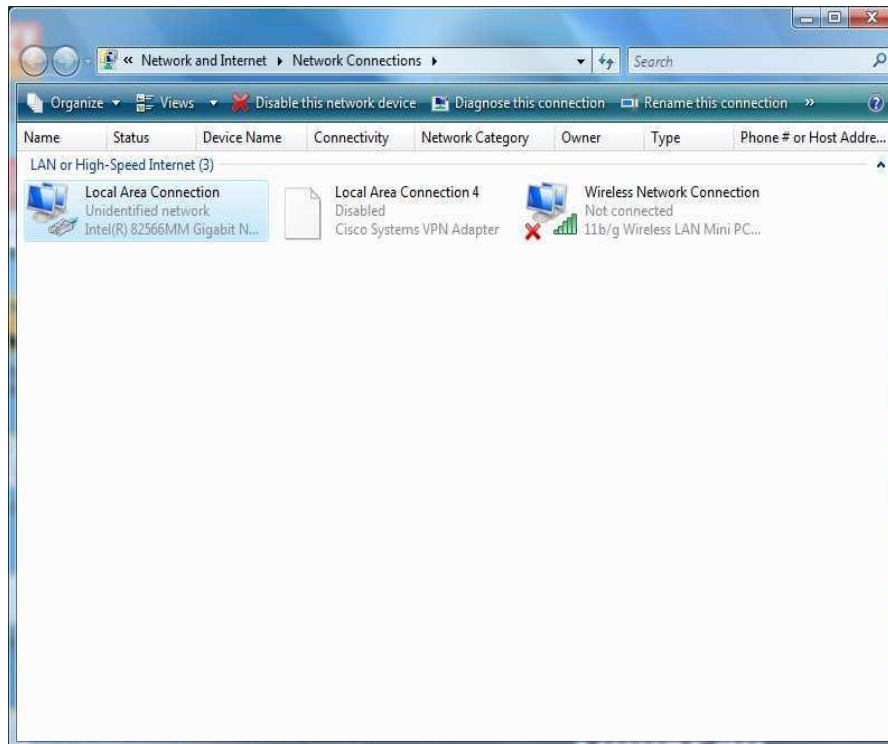
Business Broadband Service
IPv6 Configuration Guide
[Windows 7 / Vista]

(Version 2.0)

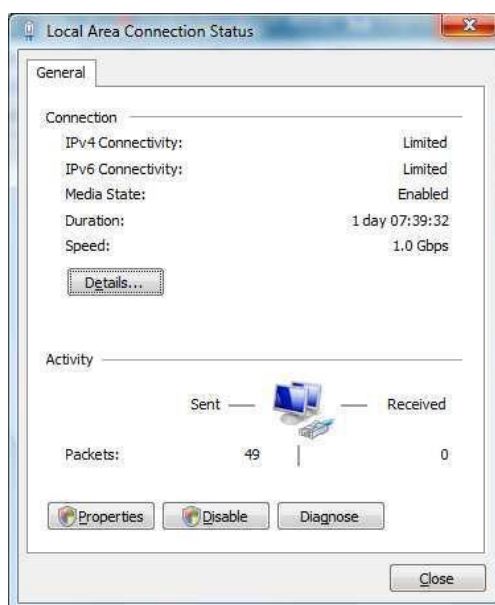
HKBN Enterprise Solutions is the brand / trading name of HKBN Enterprise Solutions Limited and/or HKBN Enterprise Solutions HK Limited

Windows Vista / Windows 7

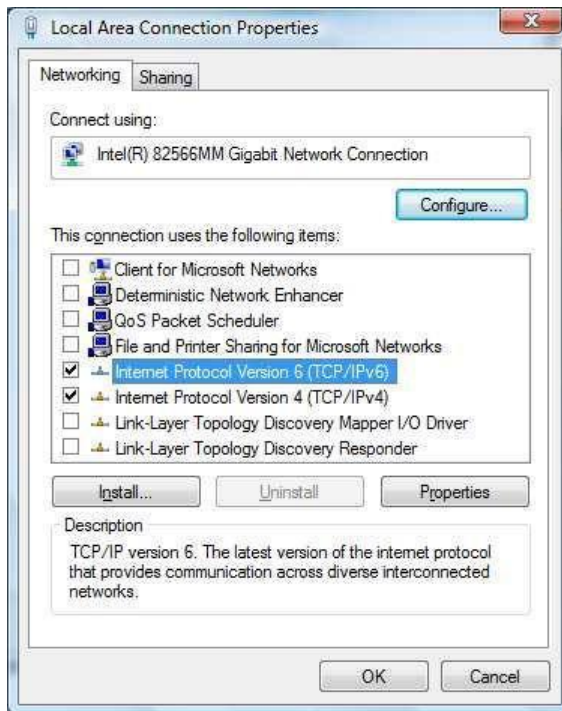
1. From the task bar, click **Start** and select **Control Panel**
2. Click **Network & Internet**, and then choose **Network Connections**
3. Double Click the connection that you want to change



4. Click **Properties**

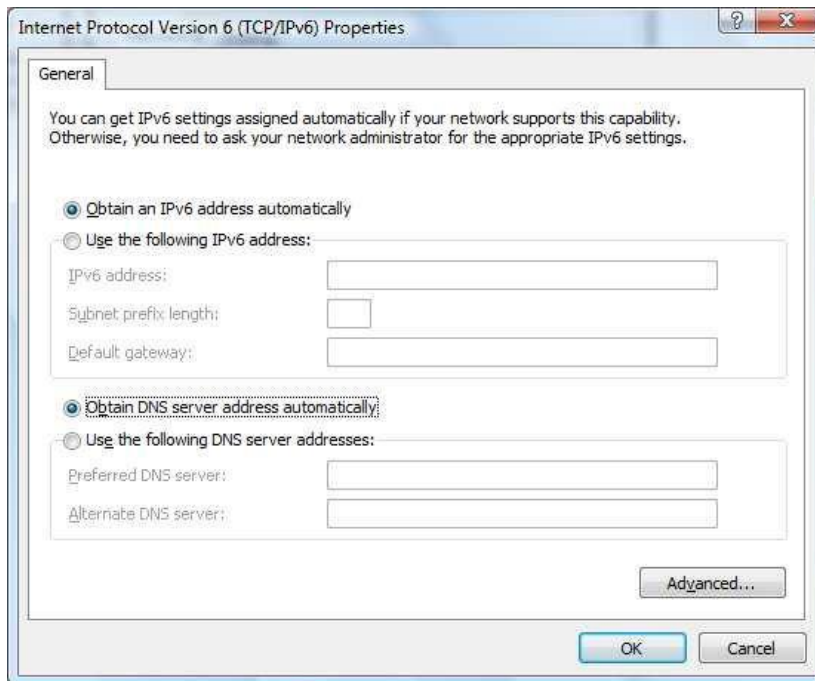


5. Select **Networking** tab page and then select **Internet Protocol Version 6 (TCP/IPv6)**
6. Click **Properties**



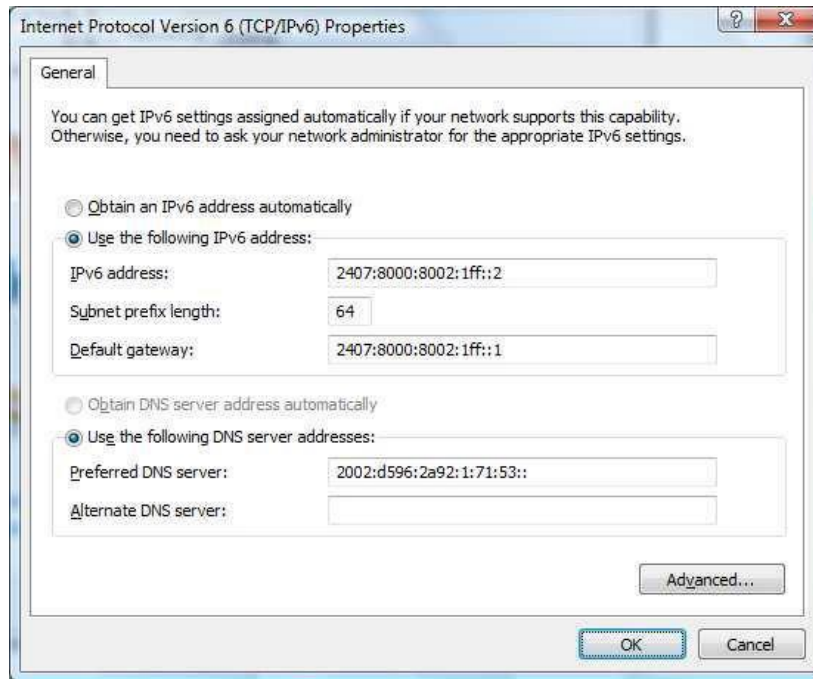
7. Click **Properties**

For Auto IP address assignment, please click the following two fields:



For hard code the IP address, select **Use the following IPv6 Address:**

- Type in “IPv6 address”, “Subnet Prefix Length” and “Default Gateway address” as the following screen.
- Type in “Preferred DNS server”. Then click **OK** to finish the set up.

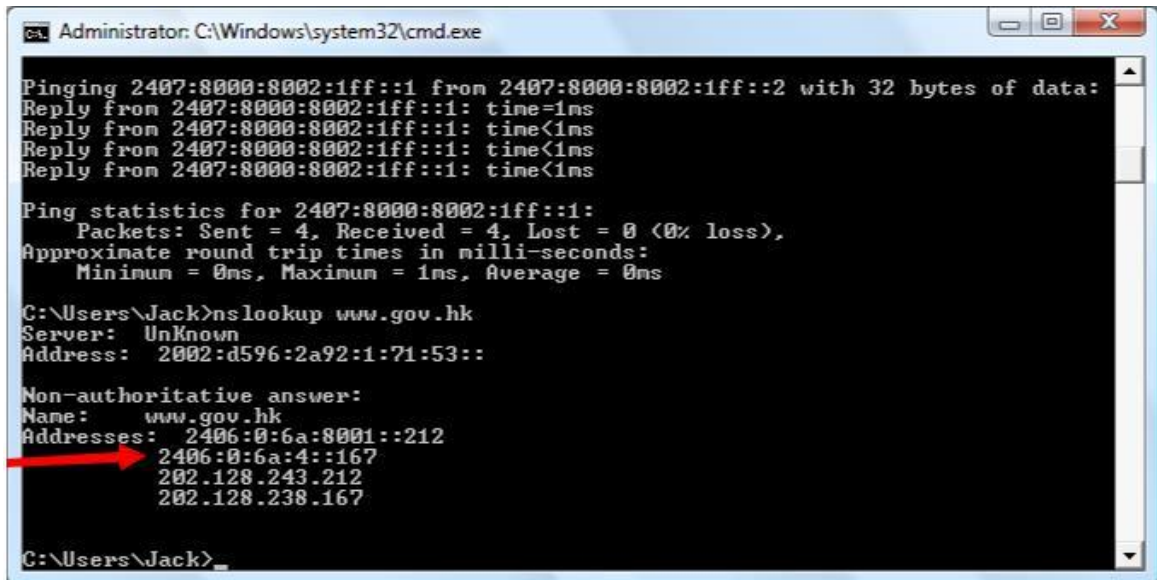


8. Test the connection, open the Internet Explorer, type the website which has IPv6 address, e.g. www.gov.hk



Business Broadband Service – IPv6 Configuration Guide (Win)

9. Check the connection and the IPv6 address: Open the command prompt Type “nslookup [website]”
e.g., nslookup www.gov.hk and you can find the www.gov.hk IPv6 address



```
Administrator: C:\Windows\system32\cmd.exe

Pinging 2407:8000:8002:1ff::1 from 2407:8000:8002:1ff::2 with 32 bytes of data:
Reply from 2407:8000:8002:1ff::1: time=1ms
Reply from 2407:8000:8002:1ff::1: time<1ms
Reply from 2407:8000:8002:1ff::1: time<1ms
Reply from 2407:8000:8002:1ff::1: time<1ms

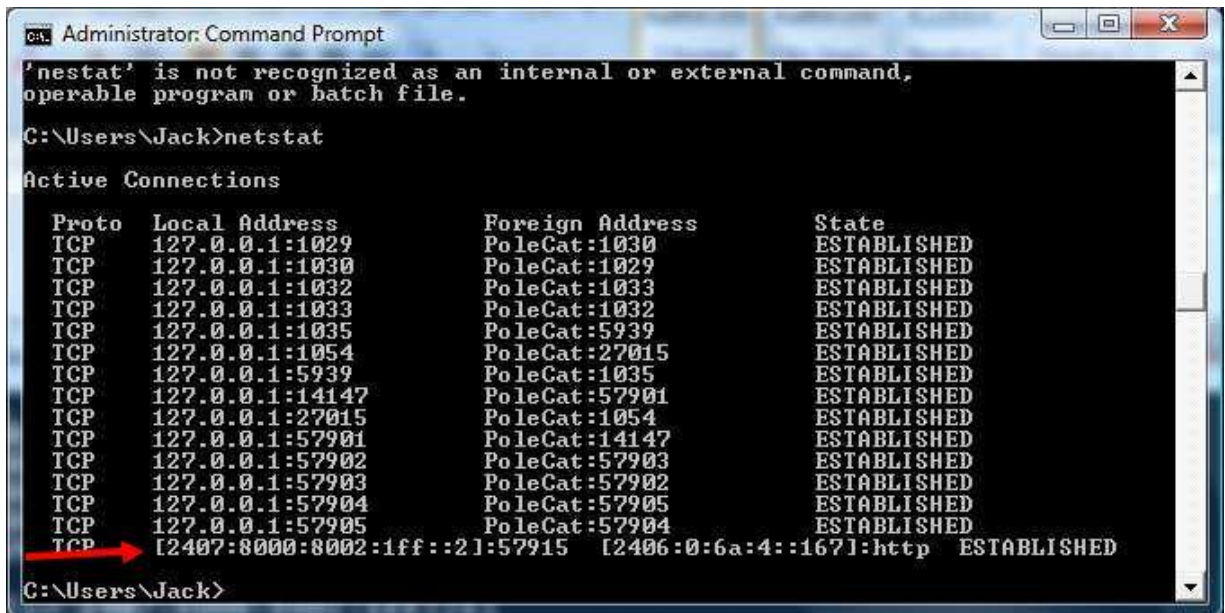
Ping statistics for 2407:8000:8002:1ff::1:
    Packets: Sent = 4, Received = 4, Lost = 0 (0% loss),
    Approximate round trip times in milli-seconds:
        Minimum = 0ms, Maximum = 1ms, Average = 0ms

C:\Users\Jack>nslookup www.gov.hk
Server:      UnKnown
Address:    2002:d596:2a92:1:71:53::

Non-authoritative answer:
Name:      www.gov.hk
Addresses: 2406:0:6a:8001::212
           2406:0:6a:4::167
           202.128.243.212
           202.128.238.167

C:\Users\Jack>
```

10. Type “netstat”. Will see the IPv6 address for www.gov.hk.



```
Administrator: Command Prompt

'netstat' is not recognized as an internal or external command,
operable program or batch file.

C:\Users\Jack>netstat

Active Connections

Proto Local Address           Foreign Address         State
TCP   127.0.0.1:1029          PoleCat:1030           ESTABLISHED
TCP   127.0.0.1:1030          PoleCat:1029           ESTABLISHED
TCP   127.0.0.1:1032          PoleCat:1033           ESTABLISHED
TCP   127.0.0.1:1033          PoleCat:1032           ESTABLISHED
TCP   127.0.0.1:1035          PoleCat:5939           ESTABLISHED
TCP   127.0.0.1:1054          PoleCat:27015          ESTABLISHED
TCP   127.0.0.1:5939          PoleCat:1035           ESTABLISHED
TCP   127.0.0.1:14147         PoleCat:57901          ESTABLISHED
TCP   127.0.0.1:27015         PoleCat:1054           ESTABLISHED
TCP   127.0.0.1:57901         PoleCat:14147          ESTABLISHED
TCP   127.0.0.1:57902         PoleCat:57903          ESTABLISHED
TCP   127.0.0.1:57903         PoleCat:57902          ESTABLISHED
TCP   127.0.0.1:57904         PoleCat:57905          ESTABLISHED
TCP   127.0.0.1:57905         PoleCat:57904          ESTABLISHED
TCP   [2407:8000:8002:1ff::2]:57915 [2406:0:6a:4::167]:http ESTABLISHED

C:\Users\Jack>
```