

香港寬頻商業寬頻服務
HKBN
Business Broadband Service

互聯網連線配置及電子郵件設定指南
**Internet Connection & Email
Configuration Guide**

目錄 Table of Content

- (I) 簡介 Introduction
- (II) 電腦系統基本要求 System Requirement
- (III) 如何安裝香港寬頻商業寬頻服務
How to Use HKBN Business Broadband Service

視窗 98 動態 IP 位址配置指南
Installation Guide for Windows 98 Using DHCP IP Address
視窗 98 固定 IP 位址配置指南
Installation Guide for Windows 98 Using Static IP Address
- (IV) 如何設定 Internet Explorer
Internet Explorer Set Up via HKBN Business Broadband
- (V) HKBN Broadband Mail POP3 用戶設定 Outlook 手冊
HKBN Broadband Mail Outlook Setup for POP3 User
Guide
- (VI) 如何透過 HKBN Broadband Mail 網上電郵服務接收電子郵件
How to Check E-mail via HKBN Broadband Mail Web-
based E-mail Account

(I) 簡介 Introduction

香港寬頻為配備自建設施的寬頻及多媒體服務供應商，致力為客戶提供完善先進的寬頻互聯網方案，以及優質的客戶服務。透過最新的光纖互連大廈互聯網接駁技術，香港寬頻商業寬頻服務為您提供可靠及相同雙向頻寬的互聯網服務。

HKBN's Business Broadband Service offers customers high-speed access to the Internet. Our Fiber-To-The-Building architecture caters for high speed and high bandwidth multimedia applications with two-way symmetric bandwidth for upload and download.

這本安裝指南能讓您簡易地使用我們為您提供的優質互聯網服務。

Simply follow the instructions with this user guide and enjoy the many benefits of our Internet access service.

(II) 電腦系統基本要求 System Requirement

香港寬頻商業寬頻服務基本安裝配備：

Basic requirements for installation of HKBN Business Broadband:

- Pentium 電腦配備 166 MHz (或以上)處理器
Pentium 166MHz Processor (or above)
- 32MB RAM 記憶體
32MB RAM memory
- 微軟視窗 95/98/2000/ME/NT4.0 SP3
Microsoft Windows 95/98/2000/ME/NT4.0 SP3
- 已安裝之以太網絡接駁卡
Pre-installed Ethernet Card

(III) 如何安裝香港寬頻商業寬頻服務 How to Use HKBN Business Broadband Service

視窗 98 動態 IP 位址配置指南

Installation Guide for Windows 98 Using DHCP IP Address

於安裝香港寬頻商業寬頻服務前，請首先確定已安裝網路咭於電腦內，網路咭安裝程序請參照網路咭用戶手冊。

Before installing HKBN Business Broadband Service, please ensure the network card has been properly installed in your PC according to the user manual of the network card.

於完成網路咭安裝後參照下列步驟：

Follow the steps below when the LAN card has completed installation:

1. 設定網路

Network Setting

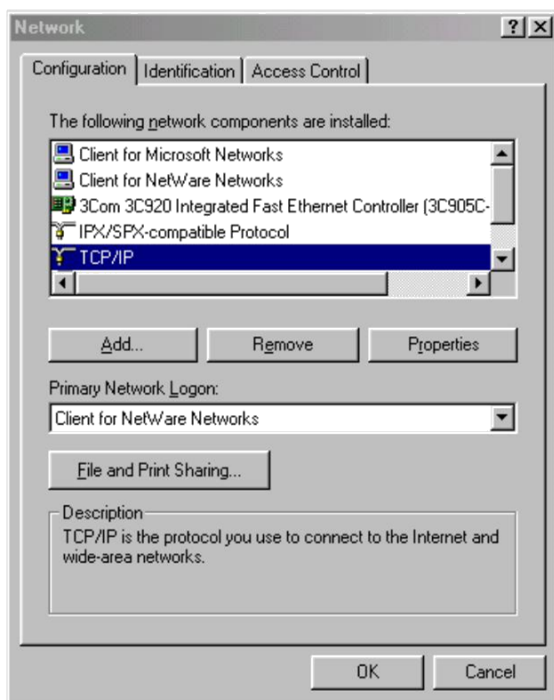
- 1.1. 按「開始」鍵並選擇「設定」
Click “Start” and select “Settings”
- 1.2. 按「控制台」
Click “Control Panel”
- 1.3. 再按兩次「網路」
Double click “Network”

2. 加裝 TCP/IP (如已加裝 TCP/IP，可直接跳至步驟三)

Add TCP/IP (GO directly to Step 3 if TCP/IP has been installed)

- 2.1. 按「新增」鍵
Click “Add”
- 2.2. 選擇「通訊協定」然後按「新增」
Choose “Protocol” and then “Add”
- 2.3. 於左欄「製造廠商」選擇「Microsoft」及於右欄「網路通訊協定」請選「TCP/IP」，然後按「確定」
Choose “Microsoft” in “Manufacturer” on the left and “TCP/IP” in “Network Protocols” on the right, and then click “OK”.

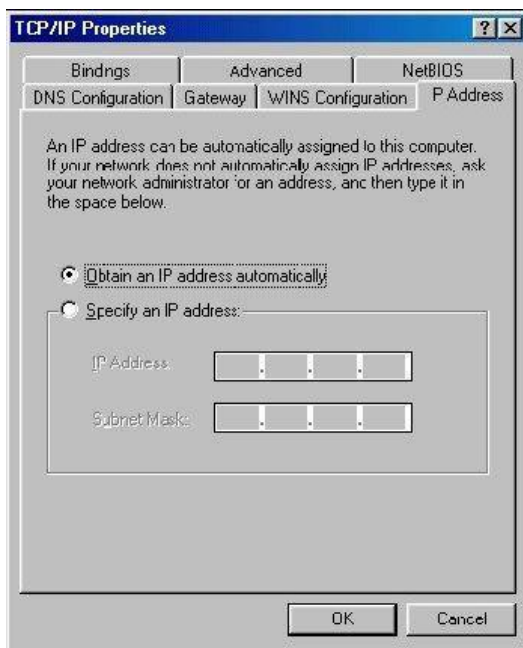
3.



- 3.1. 選擇您所安裝的網路咭的 TCP/IP
Select TCP/IP of your installed network card
- 3.2. 選擇「組態」鍵
Select “Configuration” tab
- 3.3. 選擇您所安裝的網路咭所顯示的 TCP/IP，然後按「內容」鍵
Select TCP/IP* generated from your installed network card and click “Properties”

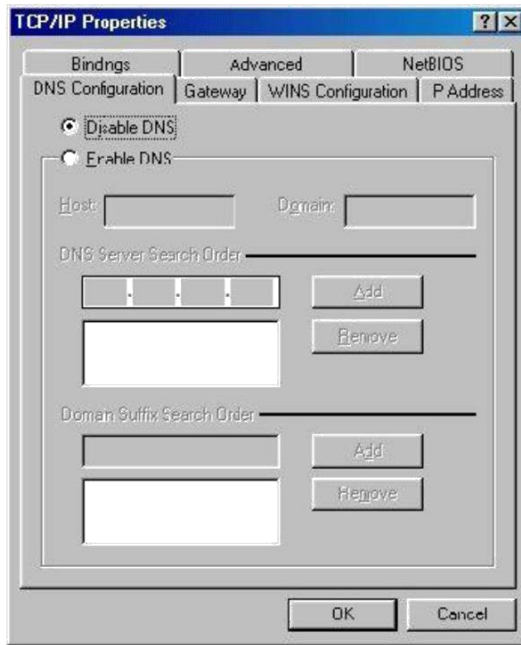
附圖所顯示的 TCP/IP 只供參考
The TCP/IP figured in diagram is for reference only

4.



- 4.1. 按「IP 位址」
Select the “IP Address” tab
- 4.2. 選擇「自動取得 IP 位址」
Select “Obtain an IP address automatically”
- 4.3. 再按「確定」
Click “OK”
- 4.4. 按「通訊閘」畫面，確定此畫面並未填寫
Click “Gateway” and make sure the field has not been filled in

5.



5.1. 選擇「DNS 組態」鍵
Select “DNS Configuration”
tab

5.2. 選擇「關閉 DNS」
Select “Disable DNS”

5.3. 再按「確定」，並重新啟動
電腦

Click “OK” and re-start
your computer

當您完成電腦的網絡設定後，下一步請安裝

Internet Explorer Please continue to set up the Internet Explorer option
after finishing the configuration of your computer's network properties.

視窗 98 固定 IP 位址配置指南

Configuration Guide for Windows 98 Using Static IP Address

在安裝香港寬頻商業寬頻服務前，請首先確定已安裝網路咭於電腦內，網路咭安裝程序請參照網路咭用戶手冊。

Before installing HKBN Business Broadband Service, please ensure the network card has been properly installed according to the user manual of the network card.

於完成網路咭安裝後參照下列步驟：

Follow the steps below when the LAN card has completed installation:

1. 設定網路

Network Setting

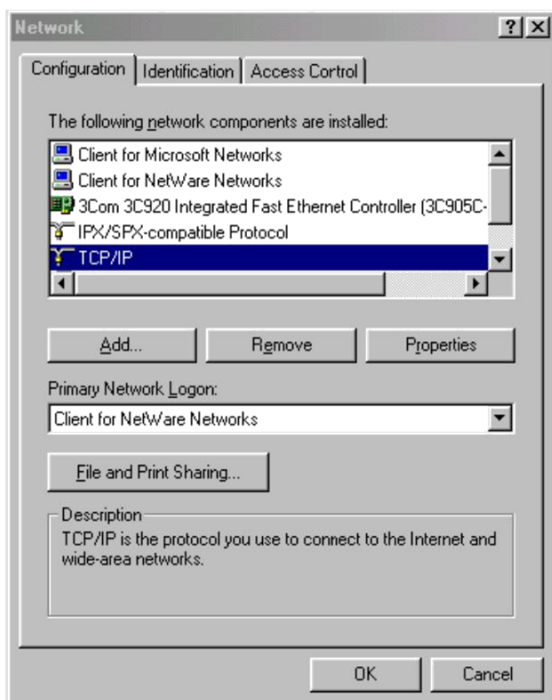
- 1.1. 按「開始」鍵並選擇「設定」
Click “Start” and select “Settings”
- 1.2. 按「控制台」
Click “Control Panel”
- 1.3. 再按兩次「網路」
Double click “Network”

2. 加裝 TCP/IP (如已加裝 TCP/IP，可直接跳至步驟三)

Add TCP/IP (GO directly to Step 3 if TCP/IP has been installed)

- 2.1. 按「新增」鍵
Click “Add”
- 2.2. 選擇「通訊協定」然後按「新增」
Choose “Protocol” and then “Add”
- 2.3. 於左欄「製造廠商」選擇「Microsoft」及於右欄「網路通訊協定」請選「TCP/IP」，然後按「確定」
Choose “Microsoft” in “Manufacturer” on the left and “TCP/IP” in “Network Protocols” on the right, and then click “OK”.

3.



3.1. 選擇您所安裝的網路咭的 TCP/IP

Select TCP/IP of your installed network card

3.2. 選擇「組態」鍵

Select "Configuration" tab

3.3. 選擇您所安裝的網路咭所顯示的

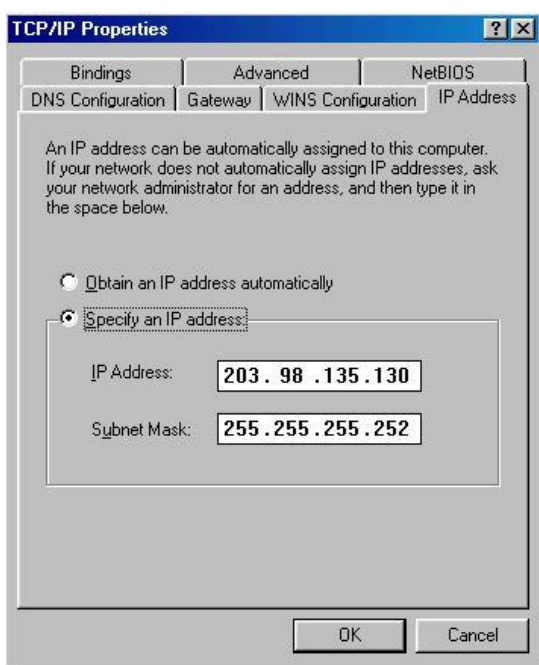
TCP/IP，然後按「內容」鍵

Select TCP/IP generated from your installed network card and click "Properties"

附圖所顯示的TCP/IP 只供參考

The TCP/IP figured in diagram is for reference only

4.

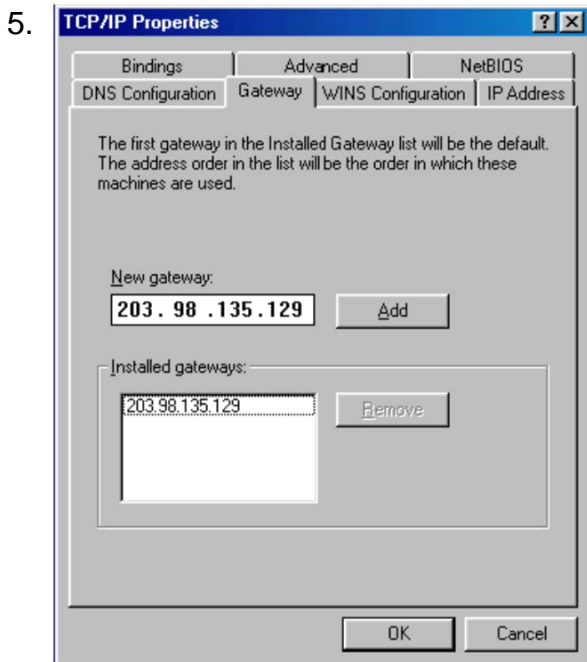


4.1. 按「IP 位址」

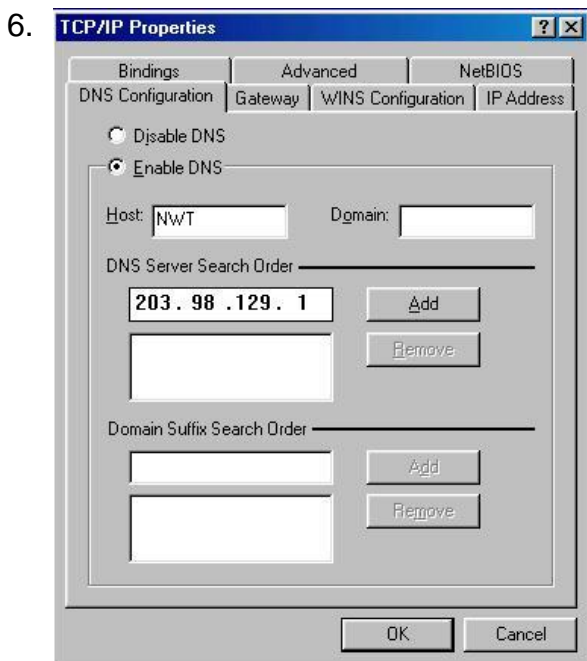
Select the "IP Address" tab

4.2. 選擇「指定 IP 位址」鍵，並輸入香港寬頻提供的「IP 位址」及「子網路遮罩」

Click on "Specify an IP address" and type in your ASSIGNED "IP address" and "Subnet Mask" provided by HKBN.

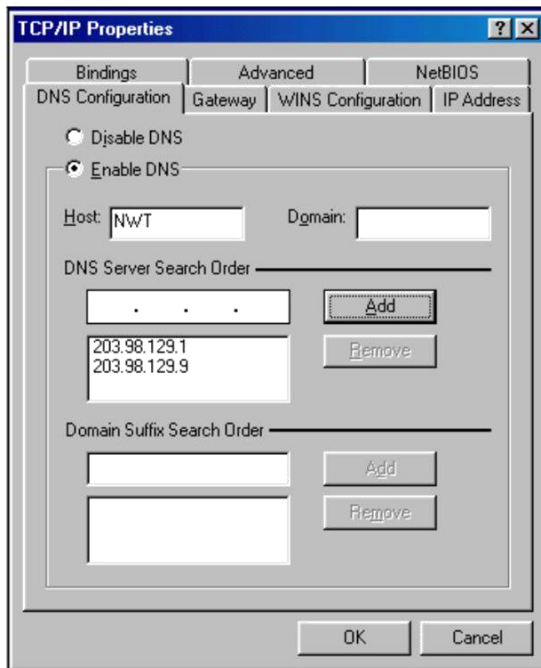


- 5.1. 按「通訊閘」
Select the "Gateway" tab
- 5.2. 輸入香港寬頻提供的「通訊閘」並按「新增」
Type in your ASSIGNED "Gateway IP address" and then click the "Add" button
- 5.3. 然後按「確定」
Click "OK"



- 6.1. 按「DNS 組態」鍵 Select "DNS Configuration" tab
- 6.2. 選擇「啟動 DNS」 Select the "Enable DNS"
- 6.3. 於「主電腦」位置鍵入名稱，在「DNS 伺服器搜尋順序」內，鍵入香港寬頻提供的 DNS，然後按「新增」
Enter a host name into the "Host" column and then enter the DNS IP addresses given by HKBN, and then click "Add".

7.



7.1. 加入 DNS IP 位址後, 按
「確定」並重新啟動電腦
After added the DNS IP
addresses, click "OK" and
re-start your computer

當您完成電腦的網絡設定後，下一步請安裝

Internet Explorer Please continue to set up the Internet Explorer option
after finishing the configuration of your computer's network properties.

(IV) 如何設定 Internet Explorer Internet Explorer Set Up via HKBN Business Broadband

1. 設定首頁

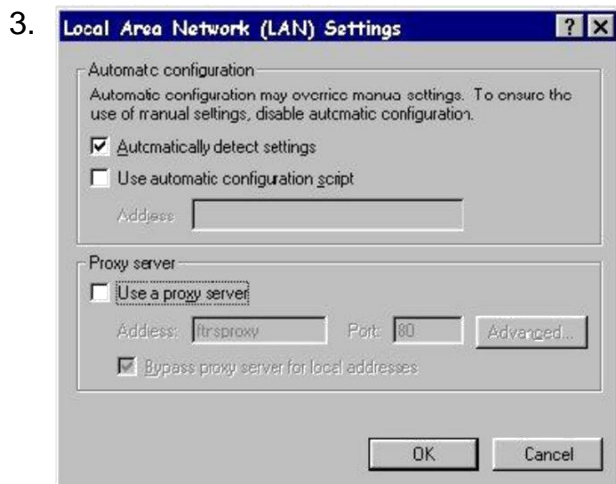
Configure home page

- 1.1. 按「開始」及選擇「設定」
Click "Start" and select "Settings"
- 1.2. 再按「控制台」
Click "Control Panel"
- 1.3. 按兩次「Internet 選項」
Double click "Internet Options"
- 1.4. 選擇「一般」鍵
Select "General" tab
- 1.5. 在網址一欄輸入 <http://hkbnes.net>
Enter <http://hkbnes.net> in the "address" field of "Homepage" Section
- 1.6. 按「確定」
Click "OK" to confirm

2.



- 2.1. 選擇「連線」
Select "Connection" tab
- 2.2. 按「區域網路設定」
Click "LAN Settings"



3.1. 在「區域網路設定」內選擇
「自動偵測設定」

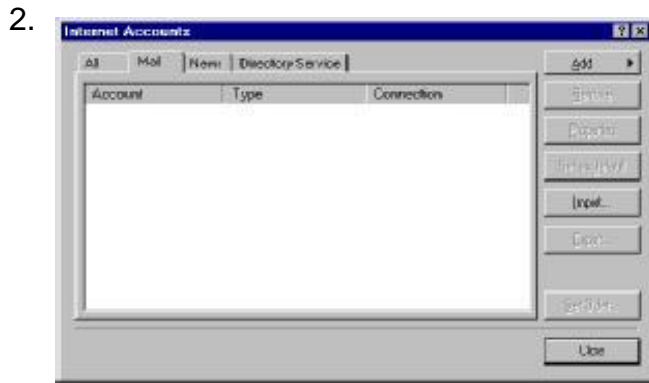
Select "Automatically detect
settings" in "Local Area
Network (LAN) Settings"

3.2. 按「確定」
Click "OK"

4. 然後重新啟動 Internet Explorer
Restart the Internet Explorer

(V) HKBN Broadband Mail POP3 用戶設定 Outlook 手冊 HKBN Broadband Mail Outlook Setup for POP3 User Guide

1. 開啟 Microsoft Outlook / Outlook Express
Start Microsoft Outlook / Outlook Express



- 2.1. 在工具列打開「工具」並選擇「帳號」
Click on pull-down menu "Tools", then select "Accounts".

Click on pull-down menu "Tools", then select "Accounts".

- 2.2. 在「Internet 帳號」選擇「新增」並選擇「郵件」
Click on "Internet Accounts" tab and then click the "Add" button and select "Mail".

Click on "Internet Accounts" tab and then click the "Add" button and select "Mail".



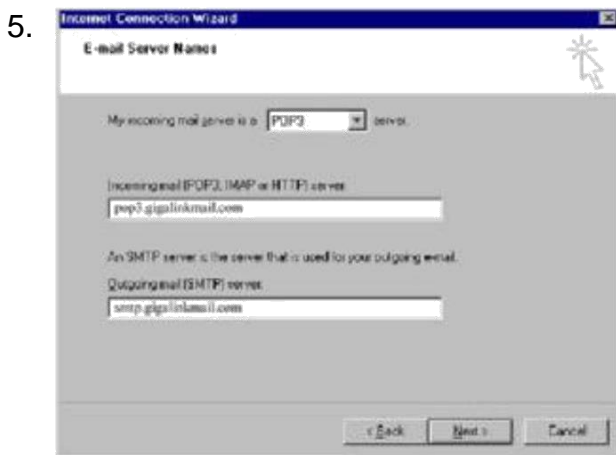
- 3.1. 在「顯示名稱」一欄輸入您的名稱，此名稱將會在送出的郵件中寄件者一欄出現。然後按「下一步」
Enter your "Display Name" and press "Next". This name will be displayed as "Sender" in all outgoing mails.

Enter your "Display Name" and press "Next". This name will be displayed as "Sender" in all outgoing mails.



- 4.1. 在「電子郵件地址」選擇「我要使用現有的電子郵件地址」，並在「電子郵件地址」填上你的個人電子郵件地址 (Email Address)，然後按「下一步」
Select "I already have an email address that I'd like to use" under Internet Connection Wizard and then Enter your email address and press "Next".

Select "I already have an email address that I'd like to use" under Internet Connection Wizard and then Enter your email address and press "Next".

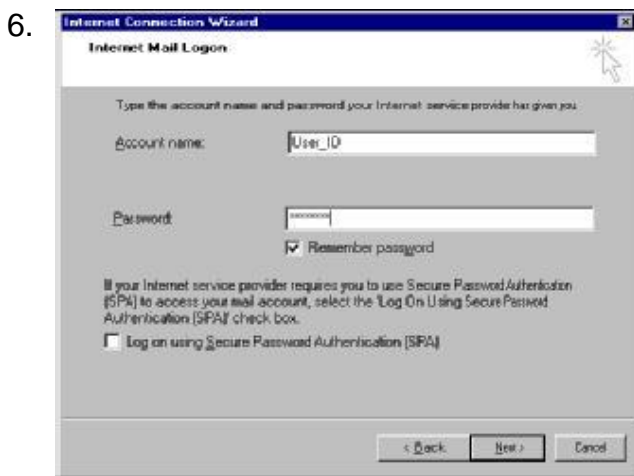


5.1. 在「我的內送郵件伺服器是」選擇 "POP3" 伺服器。

Choose "POP3" in "My incoming mail server".

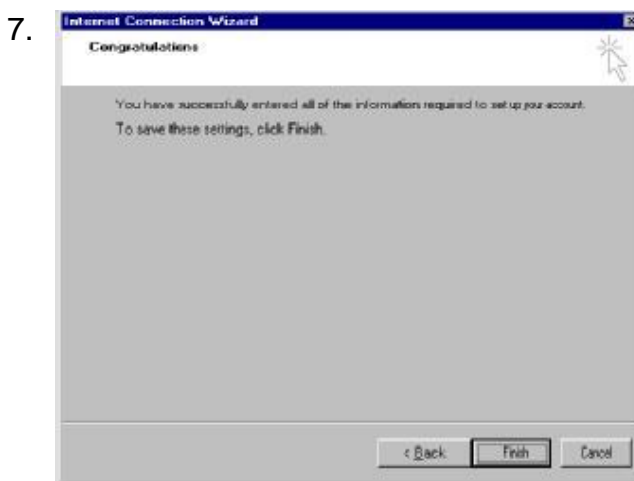
5.2. 在內收郵件伺服器一欄填上 "pop3.nwtbb.com"。在外送郵件伺服器一欄填上 "smtp.nwtbb.com"。之後按「下一步」。

Enter "pop3.nwtbb.com" in "Incoming mail server" and enter "smtp.nwtbb.com" in "Outgoing mail server". Then press "Next".



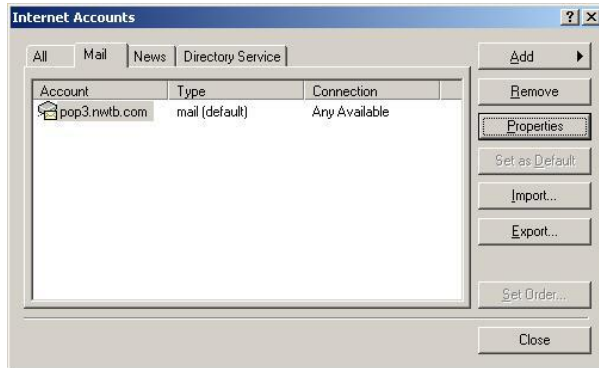
6.1. 「帳號」已顯示你的使用者名稱，如沒有，請輸入你的「使用者名稱」並輸入你的「密碼」之後按「下一步」。

Your user name should have been displayed in "Account Name". If not, enter your "User ID" and your password. Then press "Next".



7.1. 按「完成」離開。之後請重新啟動 Outlook Express。
Press "Finish" and then restart Outlook Express

8.



8.1. 在工具列打開「工具」並選擇「帳號」

Click on pull-down menu "Tools", then select "Accounts".

8.2. 在「Internet 帳號」選擇「pop3.nwtb.com」並選擇「內容」

Click on "Internet Accounts" tab and then select "pop3.nwtb.com" and click "properties".

9.



9.1. 並選擇「伺服器」頁並剔取「我的伺服器需要認證」

Click on "Servers" tab and tick "My server requires authentication"

(VI) 如何透過 HKBN Broadband Mail 網上電郵服務接收電子郵件 **How to Check E-mail via HKBN Broadband Mail Web-based E-mail Account?**

1. 進入 <http://ecs.hkbnes.net> 。
2. Go to <http://ecs.hkbnes.net>.
3. 於「網上電郵」選項中輸入「登入名稱」、「電郵域名」及密碼...。
Enter "Username", "Email domain" and "password" in webmail box.
4. 按「遞交」。
Click "Submit".

多謝您使用香港寬頻商業寬頻服務安裝指南! 現在您可享受我們為您提供的新一代互聯網服務。

Thank you for using this HKBN Broadband Service User Guide! You can now experience our HKBN Business Broadband Service.

如有任何查詢，歡迎致電商業客戶服務熱線或電郵至：

cscorp@hkbnes.net

Should you have any further queries, please feel free to call our Corporate Customer Services Hotline or email to :

cscorp@hkbnes.net.

[商業客戶服務熱線 Business Customer Services Hotline : 128 180](tel:128180)

[24 小時維修服務熱線 24-Hour Fault Reporting Hotline : 2131 2131](tel:21312131)

[香港寬頻商業寬頻網址 HKBN Business Broadband Website :
<http://hkbnes.net>](http://hkbnes.net)