

香港寬頻商業寬頻服務  
**HKBN**  
**Business Broadband Service**

互聯網連線配置及電子郵件設定指南  
**Internet Connection & Email  
Configuration Guide**

## 目錄 Table of Content

- (I) 簡介 Introduction
- (II) 電腦系統基本要求 System Requirement
- (III) 如何安裝香港寬頻商業寬頻服務  
How to Use HKBN Business Broadband Service
  - 視窗 Vista PPPoE 接駁配置指南  
Installation Guide for Windows Vista Using PPPoE
  - 視窗 Vista 動態 IP 位址配置指南  
Installation Guide for Windows Vista Using DHCP IP Address
  - 視窗 Vista 固定 IP 位址配置指南  
Installation Guide for Windows Vista Using Static IP Address
- (IV) 如何設定 Internet Explorer  
Internet Explorer Set Up via HKBN Business Broadband
- (V) HKBN Broadband Mail POP3 用戶設定 Windows Mail 手冊  
HKBN Broadband Mail Windows Mail Setup for POP3 User Guide
- (VI) 如何透過 HKBN Broadband Mail 網上電郵服務接收電子郵件  
How to Check E-mail via HKBN Broadband Mail Web-based E-mail Account

## (I) 簡介 Introduction

香港寬頻為配備自建設施的寬頻及多媒體服務供應商，致力為客戶提供完善先進的寬頻互聯網方案，以及優質的客戶服務。透過最新的光纖互連大廈互聯網接駁技術，香港寬頻商業寬頻服務為您提供可靠及相同雙向頻寬的互聯網服務。

HKBN's Business Broadband Service offers customers high-speed access to the Internet. Our Fiber-To-The-Building architecture caters for high speed and high bandwidth multimedia applications with two-way symmetric bandwidth for upload and download.

這本安裝指南能讓您簡易地使用我們為您提供的優質互聯網服務。

Simply follow the instructions with this user guide and enjoy the many benefits of our Internet access service.

## (II) 電腦系統基本要求 System Requirement

香港寬頻商業寬頻服務基本安裝配備：

Basic requirements for installation of HKBN Business Broadband:

- Pentium 電腦配備 1 GHz (或以上)處理器  
Pentium 1GHz Processor (or above)
- 1GB RAM 記憶體  
1GB RAM memory
- 微軟視窗 Vista SP2  
Microsoft Windows Vista SP2
- 已安裝之以太網絡接駁卡  
Pre-installed Ethernet Card

### (III) 如何安裝香港寬頻商業寬頻服務 How to Use HKBN Business Broadband Service

於安裝香港寬頻商業寬頻服務前，請首先確定已安裝網路咭於電腦內，網路咭安裝程序請參照網路咭用戶手冊。

Before installing HKBN Business Broadband Service, please ensure the network card has been properly installed in your PC according to the user manual of the network card.

於完成網路咭安裝後參照下列步驟：

Follow the steps below when the LAN card has completed installation:

視窗 Vista PPPoE 接駁配置指南 Installation  
Guide for Windows Vista Using PPPoE

#### 1. 設定網路

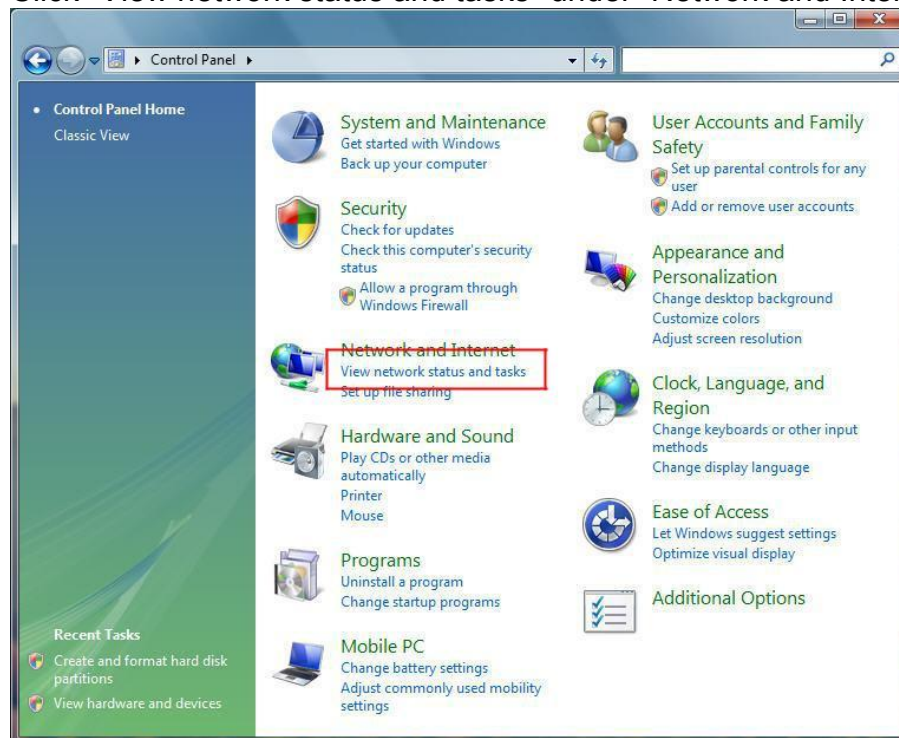
##### Network Setting

##### 1.1. 按「開始」鍵並選擇「控制台」

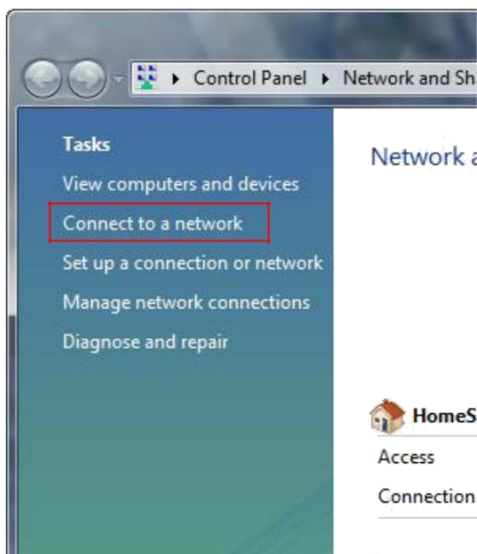
Click "Start" and select "Control Panel"

##### 1.2. 按在「網路和網際網路」上的「檢視網路狀態及工作」

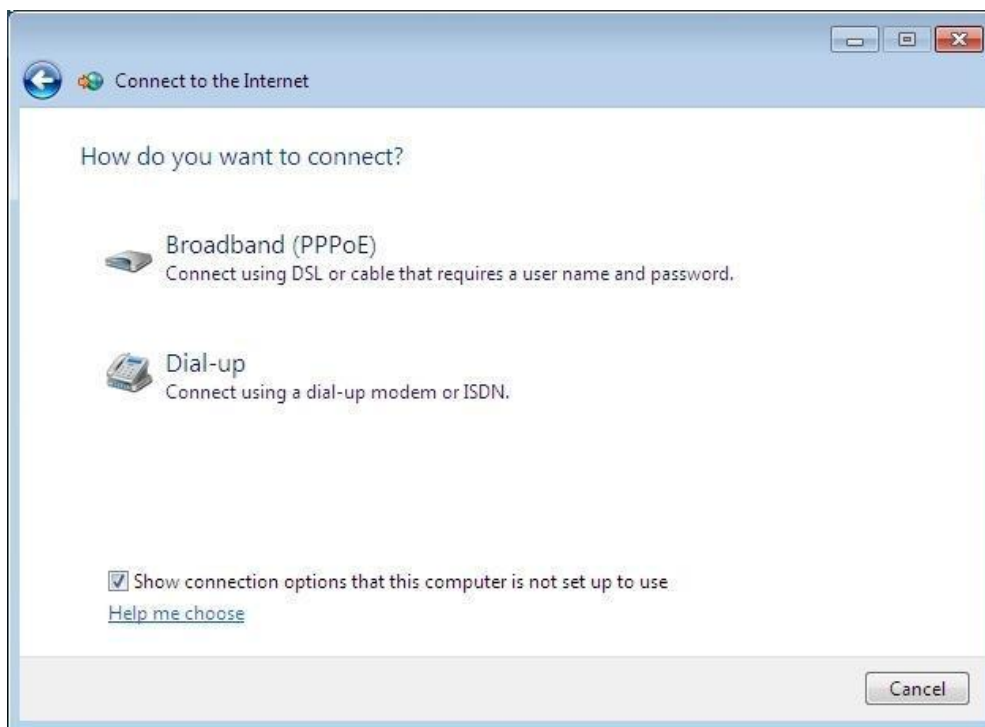
Click "View network status and tasks" under "Network and Internet",



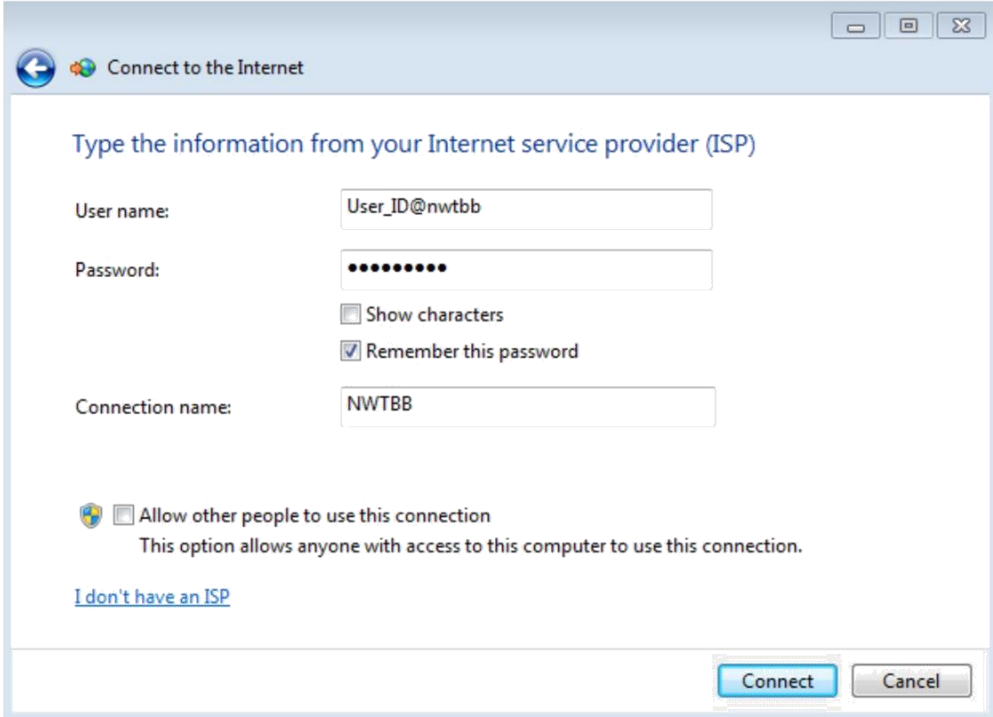
- 1.3. 在左邊目錄下，按「連線到網際網路」  
Click “Connect to a network” in the left menu.



- 1.4. 點選「寬頻 (PPPoE)」  
Click “Broadband(PPPoE)”



- 1.5. 請輸入你的「使用者名稱」 (User\_ID@nwtbb)，並輸入你的「密碼」，然後按「連線」  
Input your “User name” (User\_ID@nwtbb), and “Password”, then press “Connect”



Connect to the Internet

Type the information from your Internet service provider (ISP)

User name: User\_ID@nwtbb

Password: ●●●●●●●●  
 Show characters  
 Remember this password

Connection name: NWTBB

Allow other people to use this connection  
This option allows anyone with access to this computer to use this connection.

[I don't have an ISP](#)

Connect Cancel

如要設定自動/手動連線,請參閱“(IV)如何設定 Internet Explorer” For setting of Auto/manual connection, please refer to “(IV)Internet Explorer Set Up via HKBN Business Broadband”

視窗 Vista 動態 IP 位址配置指南

Installation Guide for Windows Vista Using DHCP IP Address

於完成網路咭安裝後參照下列步驟：

Follow the steps below when the LAN card has completed installation:

2. 設定網路

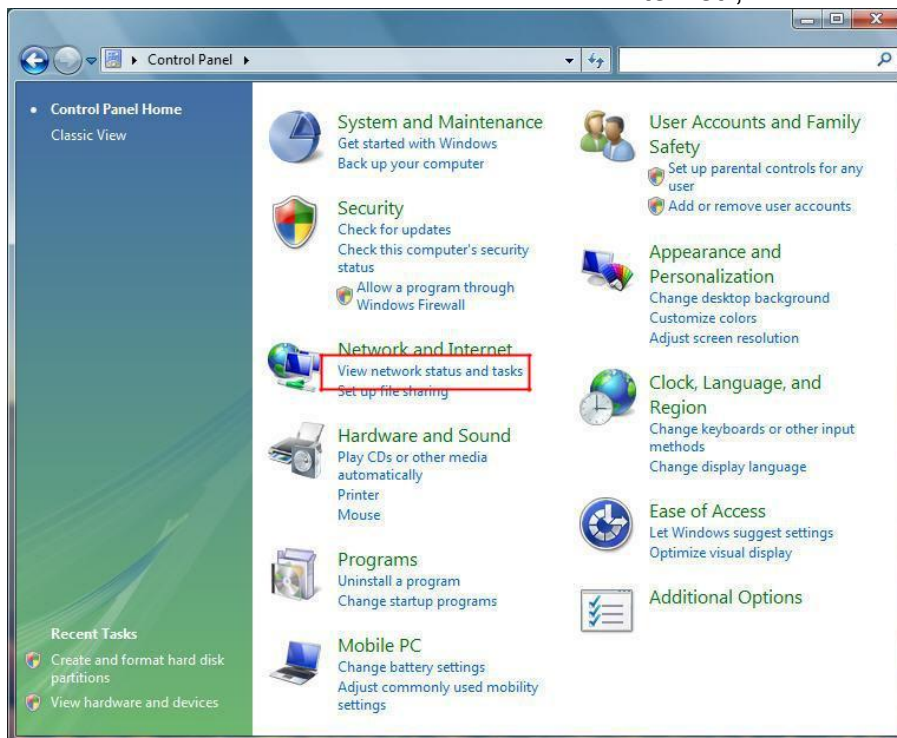
Network Setting

2.1. 按「開始」鍵並選擇「控制台」

Click "Start" and select "Control Panel"

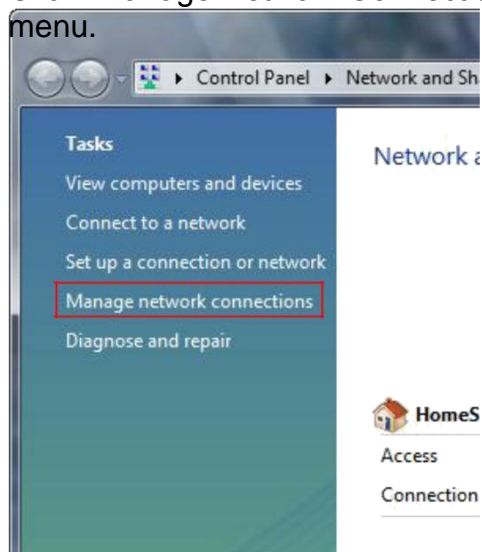
2.2. 按在「網路和網際網路」上的「檢視網路狀態及工作」

Click "View network status and tasks" under "Network and Internet",



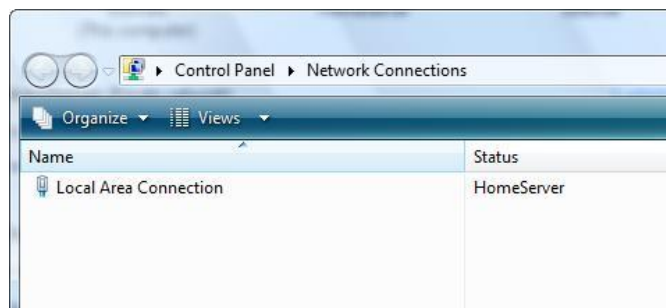
2.3. 在左邊目錄下，按「管理網路連線」

Click "Manage Network Connections" in the left menu.



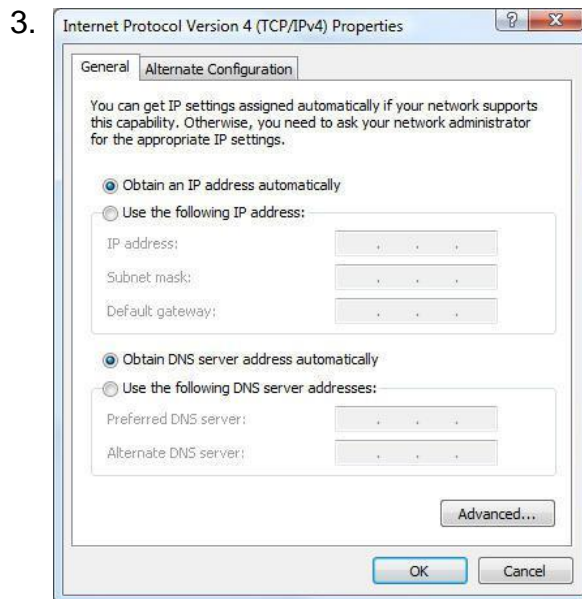
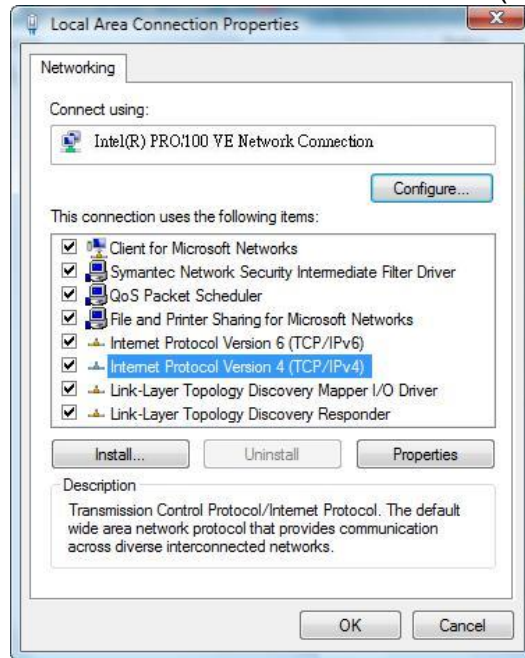
2.4. 對「區域連線」按右鍵，和點選「內容」

Right click "Local Area Network", and Click "Properties"





- 2.5. 選擇「Internet Protocol Version 4(TCP/IPv4)」和點選「內容」  
Select “Internet Protocol Version 4(TCP/IPv4)”, and Click “Properties”



- 3.1. 選擇「自動取得 IP 位址」  
Select “Obtain an IP address automatically”
- 3.2. 選擇「自動取得 DNS 伺服器位址」  
Select “Obtain DNS server address automatically”
- 3.3. 再按「確定」  
Click “OK”

視窗 Vista 固定 IP 位址配置指南

Configuration Guide for Windows Vista Using Static IP Address

於完成網路咭安裝後參照下列步驟：

Follow the steps below when the LAN card has completed installation:

4. 設定網路

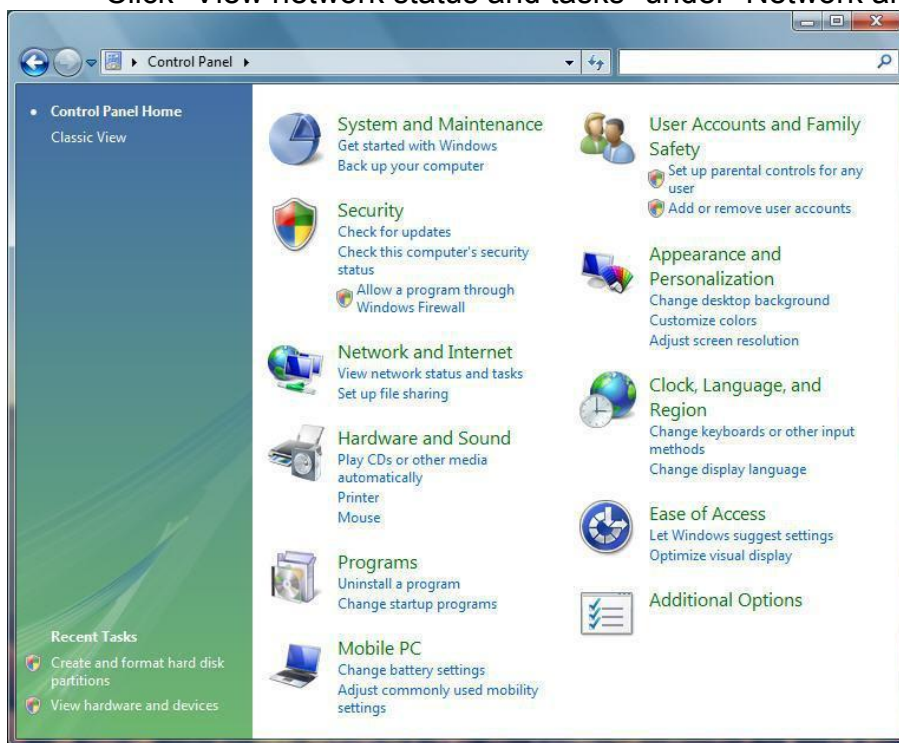
Network Setting

4.1. 按「開始」鍵並選擇「控制台」

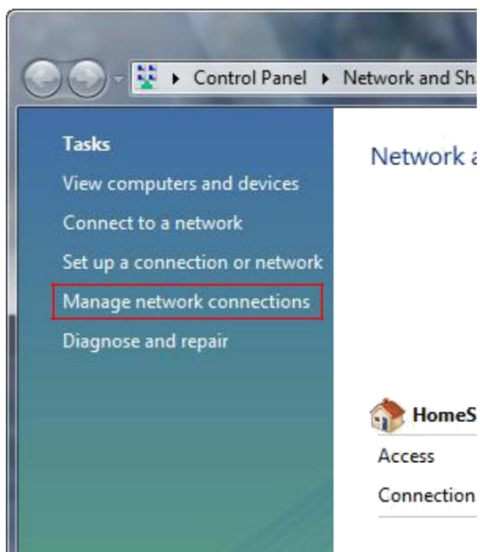
Click "Start" and select "Control Panel"

4.2. 按在「網路和網際網路」上的「檢視網路狀態及工作」

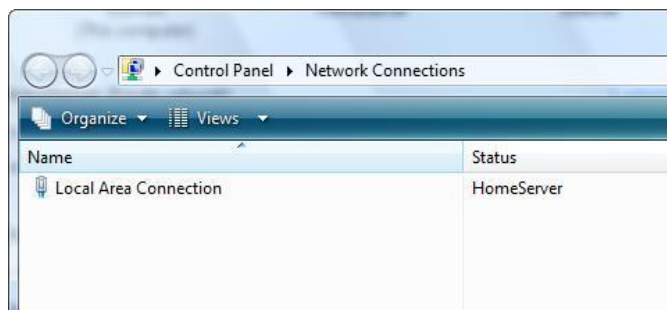
Click "View network status and tasks" under "Network and Internet",



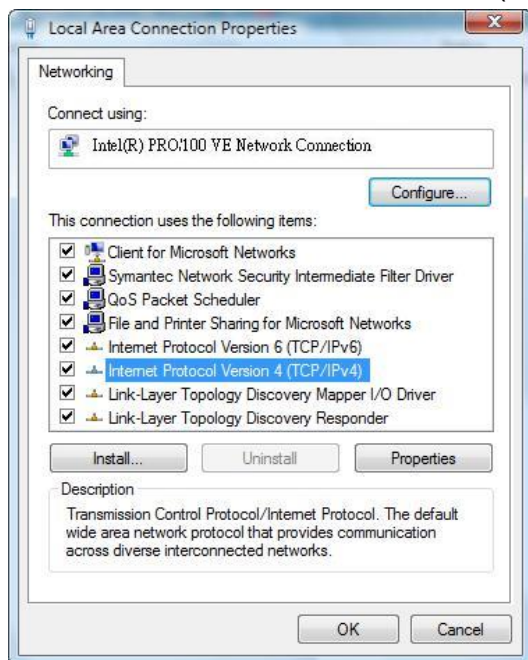
- 4.3. 在左邊目錄下，按「管理網路連線」  
Click "Manage Network Connections" in the left menu.



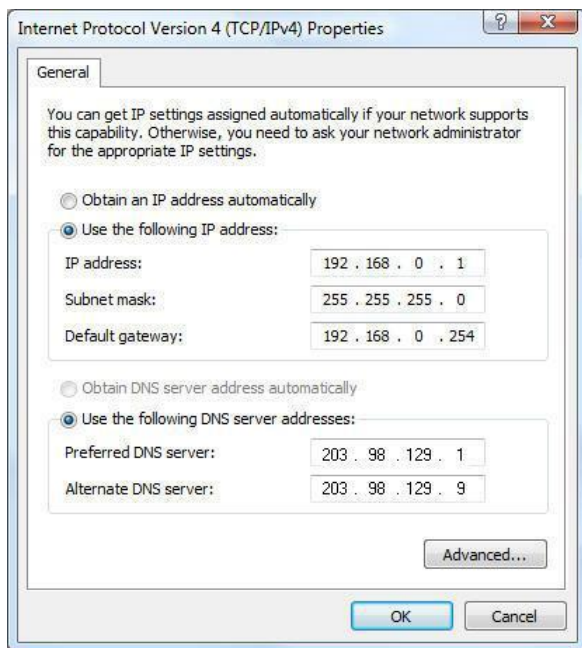
- 4.4. 對「區域連線」按右鍵，和點選「內容」  
Right click "Local Area Network", and Click "Properties"



- 4.5. 選擇「Internet Protocol Version 4(TCP/IPv4)」和點選「內容」  
Select “Internet Protocol Version 4(TCP/IPv4)”, and Click “Properties”



5.



- 5.1. 選擇「使用下列的 IP 位址」  
Select “Use the following IP address”
- 5.2. 輸入香港寬頻提供的 IP 位址及子網路遮罩  
Type in your ASSIGNED "IP address" and "Subnet Mask" provided by HKBN.
- 5.3. 選擇「使用下列的 DNS 伺服器位址」  
Select “Use the following DNS server addresses”
- 5.4. 輸入香港寬頻提供的 DNS 伺服器位址，並按「確定」  
Type in your ASSIGNED "DNS server" addresses provided by HKBN, and click “OK”.

## (IV) 如何設定 Internet Explorer Internet Explorer Set Up via HKBN Business Broadband

### 1. 設定首頁

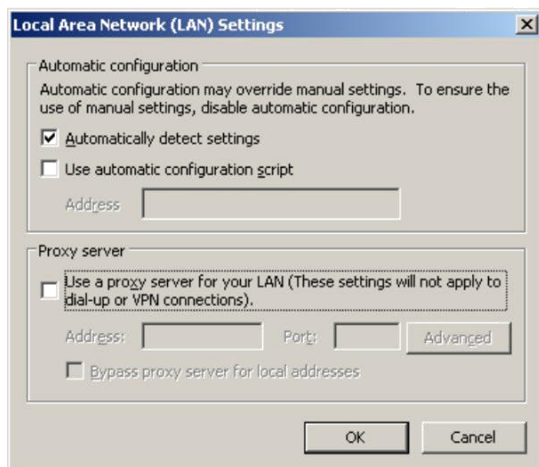
Configure home page

- 1.1. 按「開始」及選擇「控制台」  
Click "Start" and select " Control Panel "
- 1.2. 按兩次「Internet 選項」  
Double click "Internet Options"
- 1.3. 選擇「一般」鍵  
Select "General" tab
- 1.4. 在網址一欄輸入 http://hkbnes.net  
Enter http://hkbnes.net in the "address" field of "Homepage" Section
- 1.5. 按「確定」  
Click "OK" to confirm

### 2.



- 2.1. 選擇「連線」  
Select "Connection" tab
- 2.2. 如要每次上網時自動連線,可選擇「永遠使用預設的連線」  
Select "Always dial my default connection" if you want for automatically connection.
- 2.3. 如要每次上網時手動連線,可選擇「網絡連線不存在時撥號」  
Select "Dial whenever a network connection is not present" if you want for manually connection
- 2.4. 按「區域網路設定」  
Click "LAN Settings"



2.5. 在「區域網路設定」內選擇「自動偵測設定」

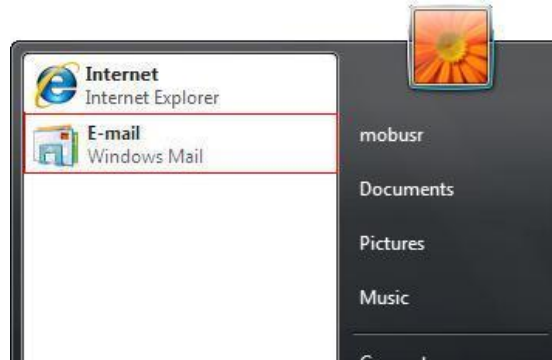
Select "Automatically detect settings" in "Local Area Network (LAN) Settings"

2.6. 按「確定」  
Click "OK"

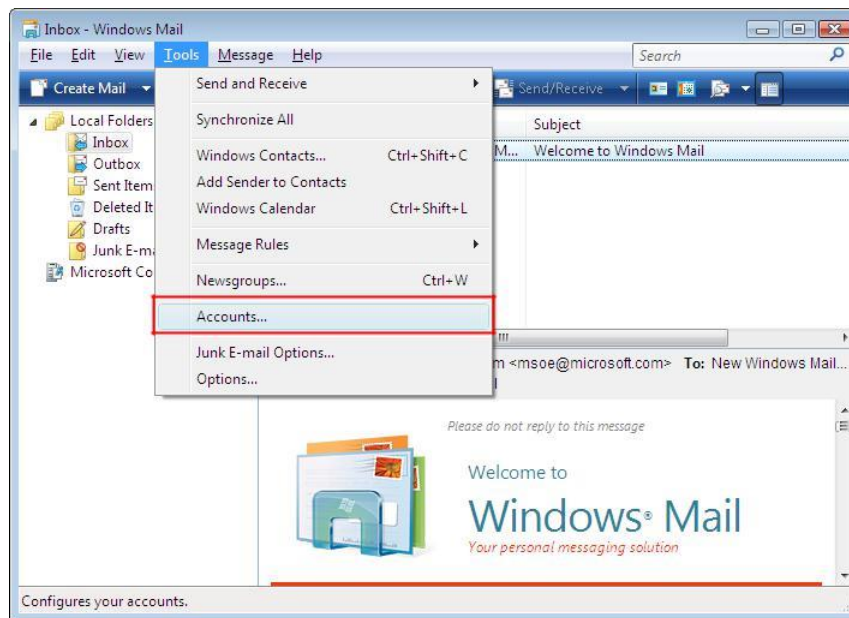
3. 然後重新啟動 Internet Explorer  
Restart the Internet Explorer

## (V) HKBN Broadband Mail POP3 用戶設定 Windows Mail 手冊 HKBN Broadband Mail Windows Mail Setup for POP3 User Guide

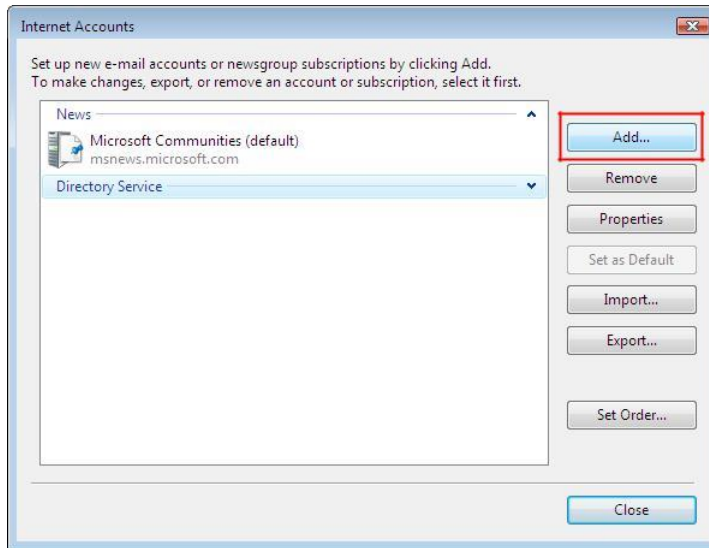
1. 按「開始」及選擇 Windows Mail Click  
“Start”, and select “Windows Mail”



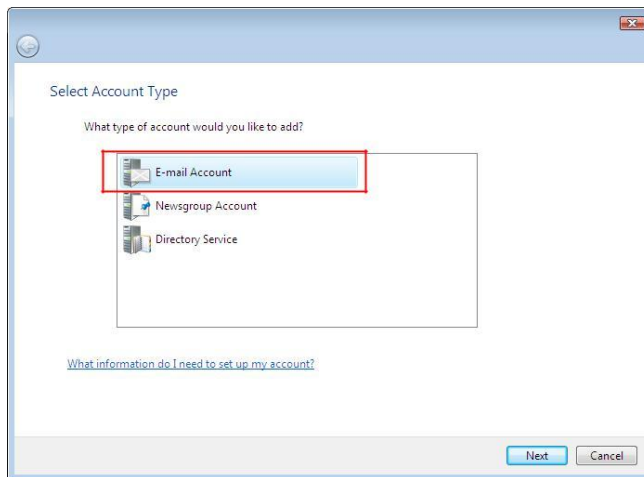
2. 在工具列打開「工具」並選擇「帳號」  
Click on pull-down menu "Tools", then select "Accounts".



- 按「新增」  
Click "Add" button and select "Mail".



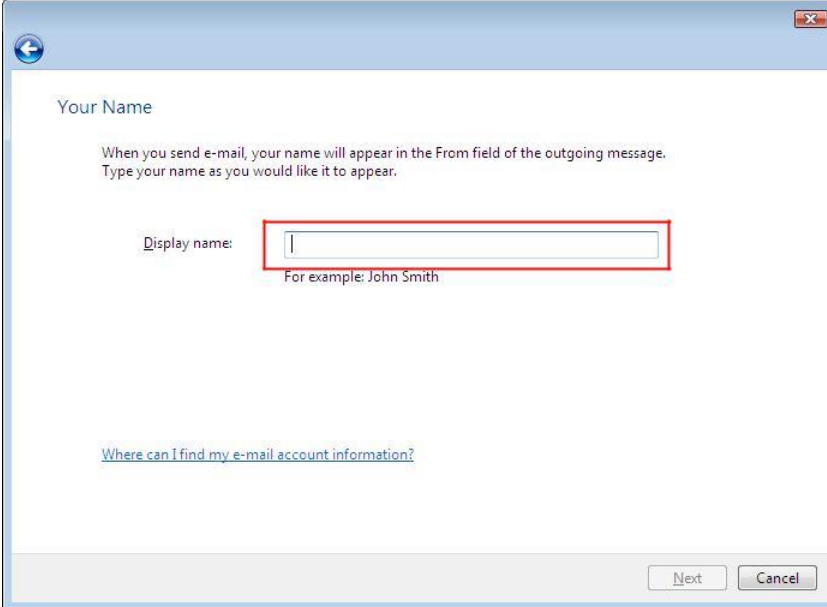
- 選擇「郵件」並按「下一步」  
Select "Email Account" and click "Next".





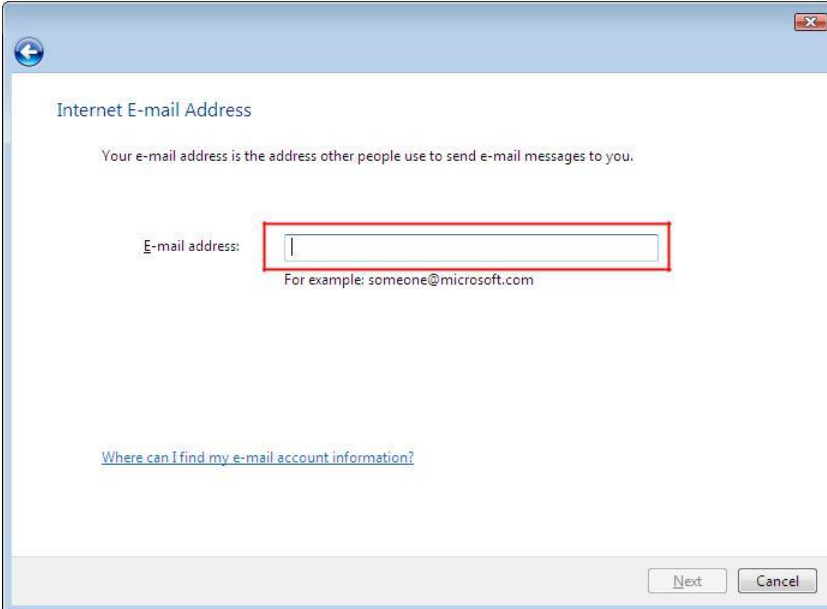
5. 在「顯示名稱」一欄輸入您的名稱，此名稱將會在送出的郵件中寄件者一欄出現。然後按「下一步」

Enter your "Display Name" and press "Next". This name will be displayed as "Sender" in all outgoing mails.



6. 在「電子郵件地址」填上你的個人電子郵件地址(Email Address)，然後按「下一步」

Enter your email address and press "Next".



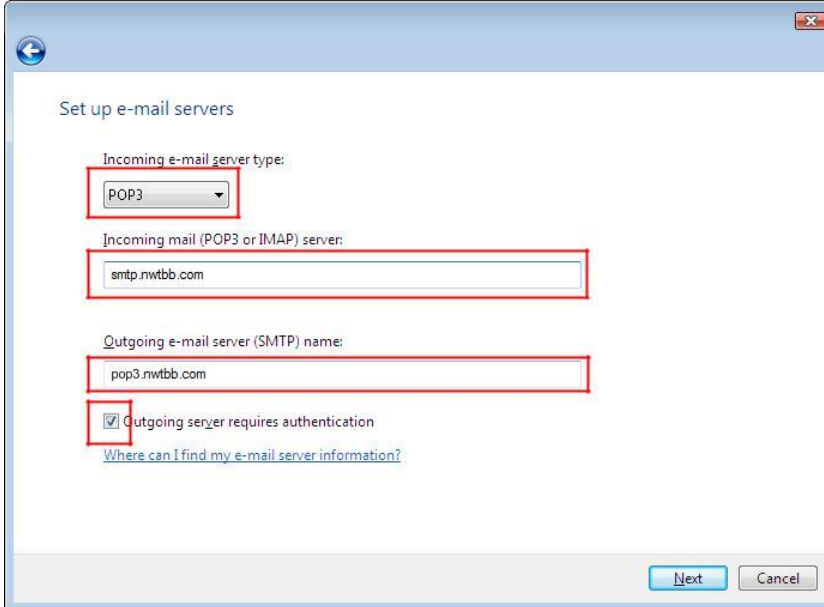
7. 在「內送電子郵件伺服器類型」選擇 "POP3" 伺服器。  
Choose "POP3" in "Incoming e-mail server type".

- 7.1. 在「內送郵件(POP3 或 IMAP)伺服器」一欄填上 "pop3.nwtbb.com"。  
Enter "pop3.nwtbb.com" in "Incoming mail (POP3 or IMAP) server"

- 7.2. 在「外寄電子郵件伺服器(SMTP)」一欄填上 "smtp.nwtbb.com"。  
Enter "smtp.nwtbb.com" in "Outgoing e-mail server (SMTP) name".

- 7.3. 剔取「我的外寄伺服器需要驗證」  
Tick "outgoing server requires authentication"

- 7.4. 之後按「下一步」。  
Then press "Next".



Set up e-mail servers

Incoming e-mail server type:  
POP3

Incoming mail (POP3 or IMAP) server:  
smtp.nwtbb.com

Outgoing e-mail server (SMTP) name:  
pop3.nwtbb.com

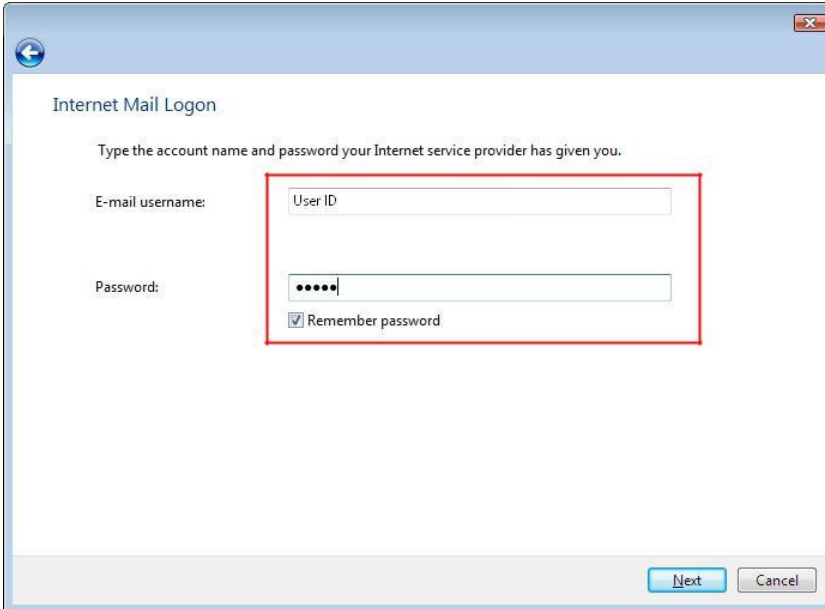
Outgoing server requires authentication

[Where can I find my e-mail server information?](#)

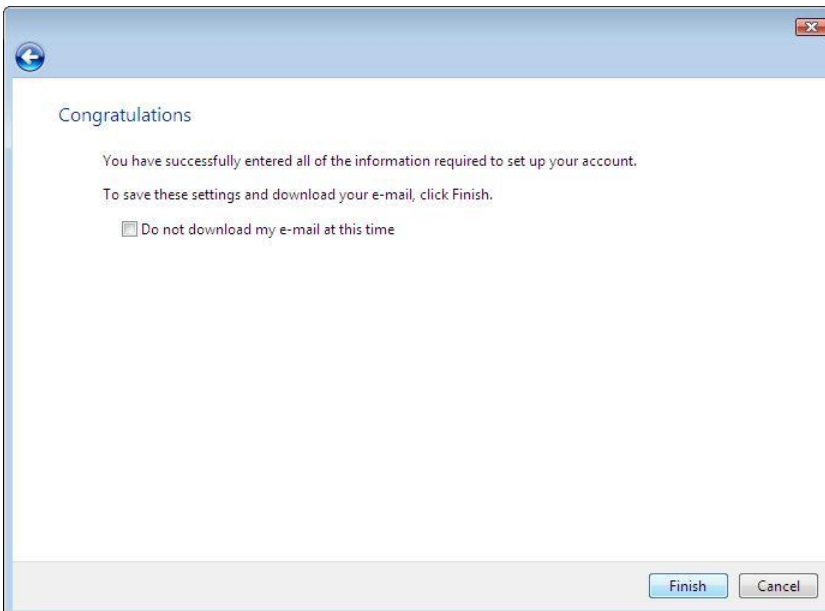
Next Cancel

8. 「電子郵件使用者名稱」已顯示你的使用者名稱，如沒有，請輸入你的「使用者名稱」並輸入你的「密碼」之後按「下一步」。

Your user name should have been displayed in "E-mail username". If not, enter your "User ID" and your password. Then press "Next".



9. 按「完成」離開。  
Press "Finish"



## (VI) 如何透過 HKBN Broadband Mail 網上電郵服務接收電子郵件 How to Check E-mail via HKBN Broadband Mail Web-based E-mail Account?

1. 進入 <http://ecs.hkbnes.net>。  
Go to <http://ecs.hkbnes.net>.
2. 於「網上電郵」選項中輸入「登入名稱」、「電郵域名」及密碼...。  
Enter "Username", "Email domain" and "password" in webmail box.
3. 按「遞交」。  
Click "Submit".

多謝您使用香港寬頻商業寬頻服務安裝指南! 現在您可享用我們為您提供的新一代互聯網服務。

Thank you for using this HKBN Broadband Service User Guide! You can now experience our HKBN Business Broadband Service.

如有任何查詢，歡迎致電商業客戶服務熱線或電郵至：

[cscorp@hkbnes.net](mailto:cscorp@hkbnes.net)

Should you have any further queries, please feel free to call our Corporate Customer Services Hotline or email to:

[cscorp@hkbnes.net](mailto:cscorp@hkbnes.net).

[商業客戶服務熱線 Business Customer Services Hotline : 128 180](tel:128180)

[24 小時維修服務熱線 24-Hour Fault Reporting Hotline : 2131 2131](tel:21312131)

[香港寬頻商業寬頻網址 HKBN Business Broadband Website :](http://hkbnes.net)

<http://hkbnes.net>